



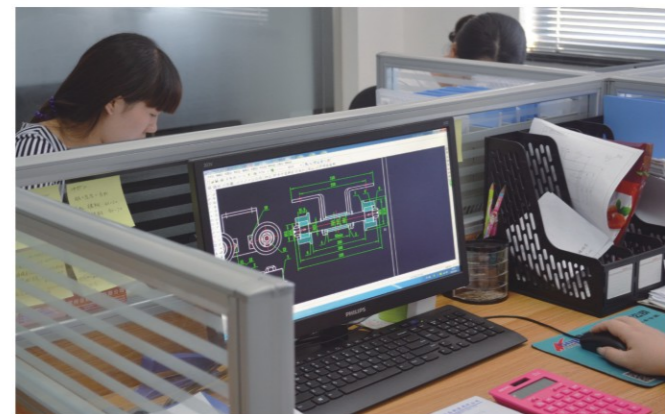
厂内全景



大门外景



办公楼大厅



办公场景

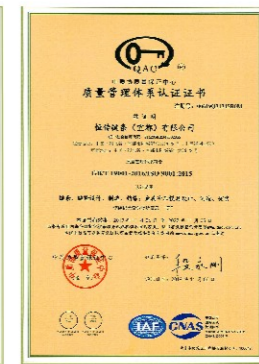


办公楼内景



质量体系认证  
是产品质量的保证

Quality System certification is the guarantee of product quality



洛氏硬度计



焊接质量压检机



金相分析仪

全面严格的测试和检查  
是保证产品质量的重要手段

Totaland strict test and check are important means to guarantee quality of products



液压万能试验机



连续网带炉



机加车间



冲压车间



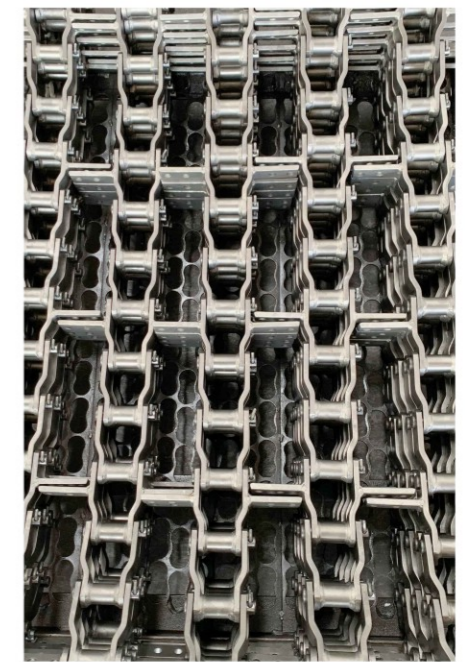
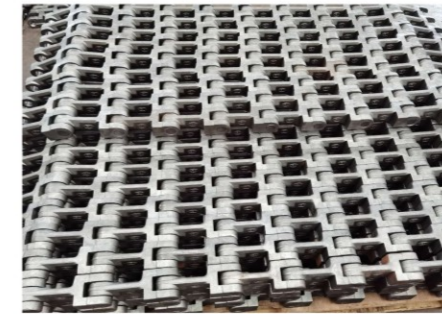
真空气体氮化炉



销轴高频淬火

## 精良装备夯实品质基础

Excellent equipments consolidate the basis of quality



## 产品目录

### 传动链系列

A系列短节距滚子链	01
A系列短节距滚子链	02
重载弯板滚子链	03

### 输送链系列

M系列输送链	04
输送链附件	05
FV系列输送链	06
RF系列输送链	07
模锻链	08

### 粮油、纸业专用链系列

模锻刮板链	10
轻型粮机链	11
焊接轻型粮机链	12
块式刮板链	13
焊接系列刮板链	14
窄系列焊接弯板链	15
宽系列焊接弯板链	16
焊接系列刮板链	17
烘干机输送链	19
直板型糖机链	20
直板型糖机链附件	21
弯板型糖机链	22
弯板型糖机链附件	23
啤酒生产线—洗瓶机链	25
木材输送链	27

### 粉体行业专用链系列

Ne提升机链	28
NSE链斗输送机链条	29
M系列斗提链	30
NBH斗提机链条	31
ZYB中央链板式链条	31
弯附板式提升机链(水泥链)	32
粉粒链运机链	33
堆取料机用链	34

### 冶金行业链系列

板式销合链	35
重载平板链	36
钢管运输链	37
钢卷输送链	39

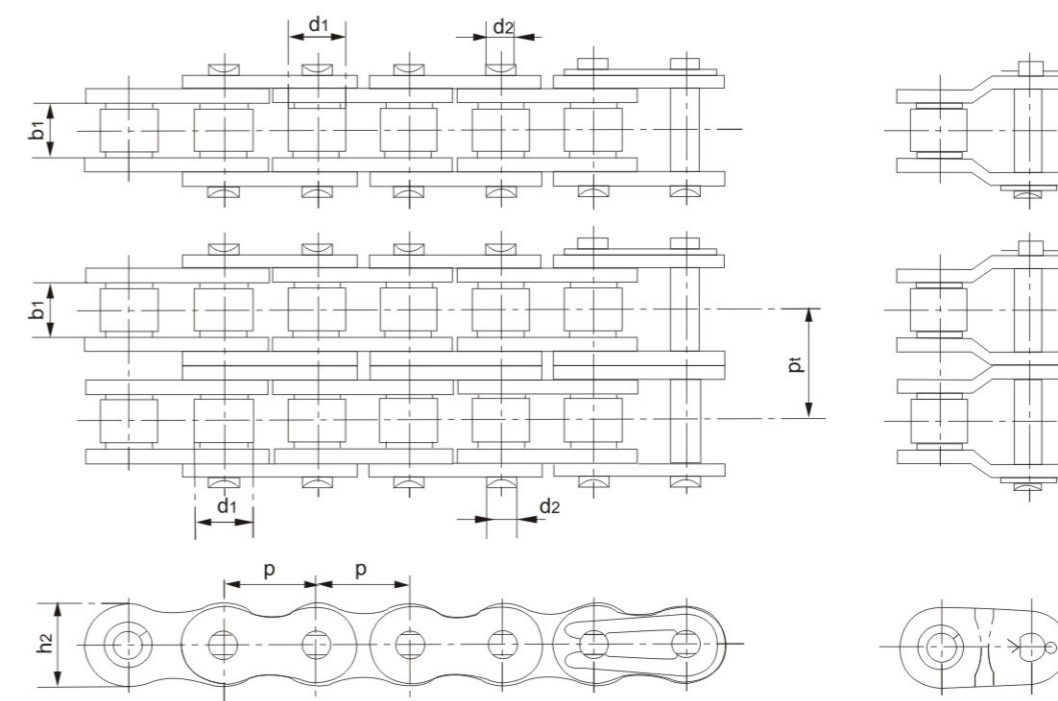
### 汽车行业链系列

模锻可拆链	40
模锻滑架	41
驱动链	42
装配线输送链	43

### 链轮系列

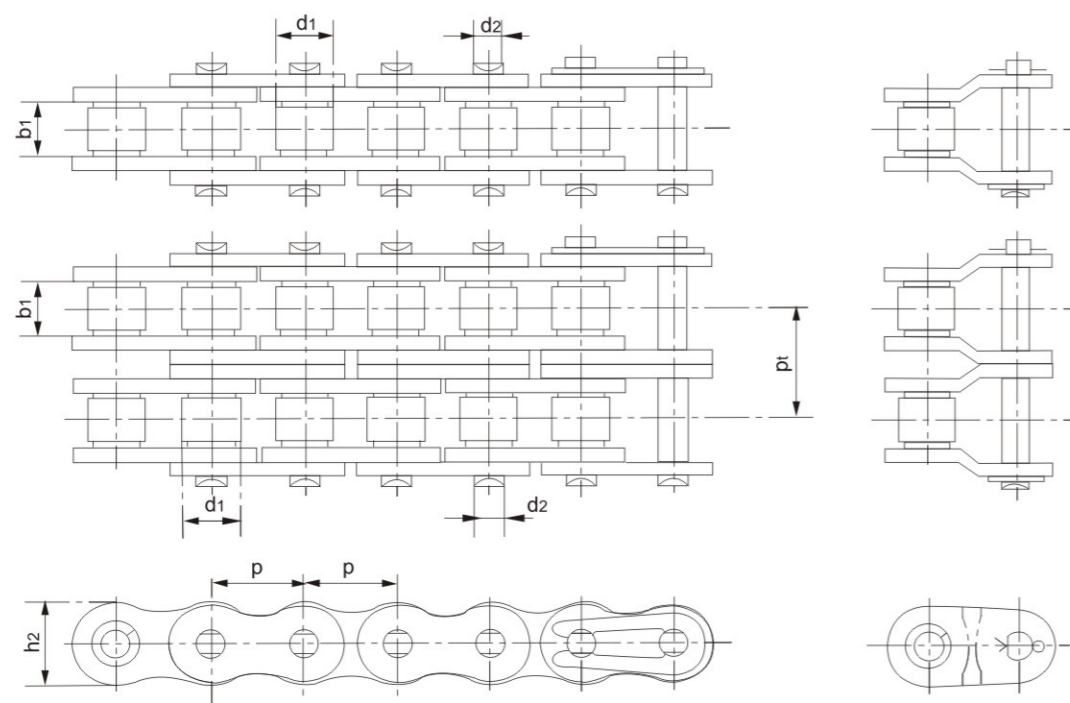
非标链轮系列	46
--------	----

## A系列短节距滚子链



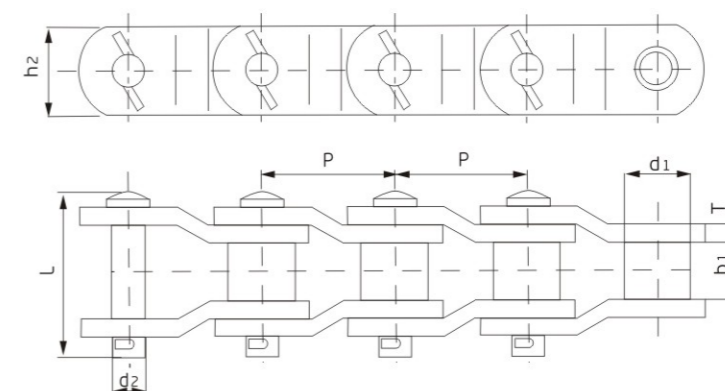
链号 Chain No.		节距 Pitch	内节内宽 Width between inner plates	滚子直径 Roller diameter	销轴直径 Pin diameter	内链板高度 Plaes depth	排距 Row distance	抗拉强度 Tensile strength			重量 Weight
GB	ANSI	P (mm)	b1 (mm)	d1(max) (mm)	d2 (mm)	h2 (mm)	Pt (mm)	单排 (KN)	双排 (KN)	三排 (KN)	单排 (kg/m)
08A	40	12.70	7.85	7.92	3.96	12	14.38	12.8	27.6	41.4	0.65
10A	50	15.88	9.40	10.16	5.08	15	18.11	21.8	43.6	65.4	1.05
12A	60	19.05	12.57	11.91	5.94	18	22.78	31.1	62.3	93.4	1.56
16A	80	25.40	15.75	15.88	7.92	24	29.29	55.6	111.2	166.8	2.63
20A	100	31.75	18.90	19.05	9.52	30	35.76	86.7	173.5	260.2	4.03
24A	120	38.10	25.22	22.23	11.10	35.8	45.44	125	249.1	373.7	5.94
28A	140	44.45	25.22	25.4	12.70	42	48.87	169	338	507.1	7.5
32A	160	50.80	31.55	28.58	14.27	48.2	58.55	222	444.8	667.2	10.2
36A	180	57.15	35.48	35.71	17.26	54	65.84	286	566.1	840.6	14.08
40A	200	63.50	37.85	39.68	19.84	60	71.55	347	693.9	1040.9	16.86
48A	240	76.20	47.35	47.63	23.81	72.1	87.83	501	1000	1501.3	23.9

## B系列短节距滚子链



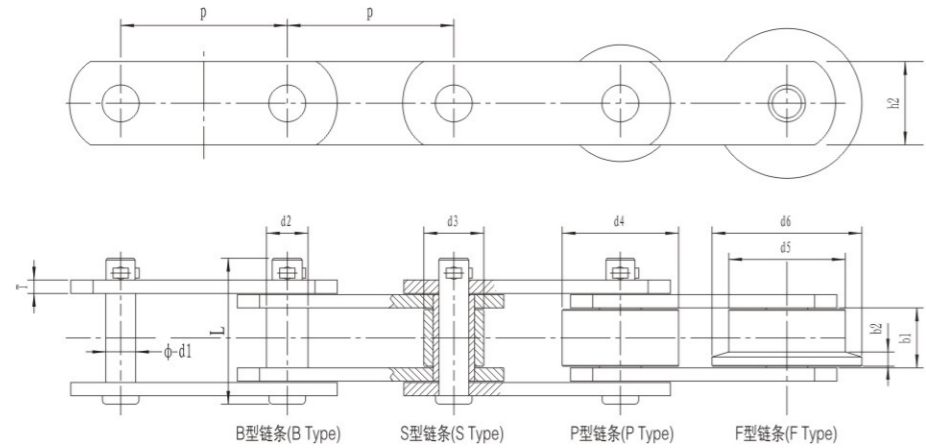
链号 Chain No.	节距 Pitch	内节内宽 Width between inner plates	滚子直径 Roller diameter	销轴直径 Pin diameter	内链板高度 Plaes depth	排距 Row distance	抗拉强度 Tensile strength			重量 Weight
							单排 (KN)	双排 (KN)	三排 (KN)	
GB	P (mm)	b1 (mm)	d1(max) (mm)	d2 (mm)	h2 (mm)	Pt (mm)				单排 (kg/m)
08B	12.70	7.75	8.51	4.45	11.80	13.92	17.8	31.1	46.65	0.72
10B	15.875	9.65	10.16	5.08	14.60	16.59	22.2	44.5	66.7	0.95
12B	19.05	11.68	12.07	5.72	16.00	19.46	28.9	57.8	86.7	1.23
16B	25.40	17.02	15.88	8.28	20.90	31.88	60	106	160	2.8
20B	31.75	19.56	19.05	10.19	26.00	36.45	95	170	250	3.9
24B	38.10	25.40	25.04	14.63	33.00	48.36	160	280	425	7.14
28B	44.45	30.99	27.94	15.90	36.70	59.56	200	360	530	9.37
32B	50.80	30.99	29.21	17.81	41.90	58.55	250	450	670	9.94
40B	63.50	38.10	39.37	22.89	52.50	72.29	355	630	950	16.4
48B	76.20	45.72	48.26	29.24	63.88	91.21	560	1000	1501.3	23.1
56B	88.90	53.34	53.98	34.32	77.85	106.60	850	1600	2240	31.2

## 重载弯板滚子链



链号 Chain No.	节距 Pitch	内节内宽 Inner width of inner link	滚子直径 Diameter of roller	链板高度 Height of sidebar	链板厚度 Thickness of sidebar	销轴长度 Length of pin	销轴直径 Diameter of pin	抗拉强度 Tensile strength	每米净重 Weight per meter
	P (mm)	b1(max) (mm)	d1(max) (mm)	h2(max) (mm)	T (mm)	L(max) (mm)	d2(max) (mm)	Q(min) (KN)	q (kg)
2010	63.50	38.10	31.75	47.80	7.90	90.70	15.90	262.00	14.0
2510	78.1	31.75	36.9	40	8.0	94.8	16.00	271.00	10.7
2512	77.90	39.60	41.28	57.00	9.70	103.40	19.08	378.00	18.0
2814	88.90	38.10	44.40	60.50	12.70	117.60	22.25	516.00	25.0
3315	103.45	49.30	45.24	63.50	14.20	134.60	23.85	596.00	27.0
3618	114.30	52.30	57.15	79.20	14.20	141.20	27.97	814.00	38.0
4020	127.00	69.90	63.50	91.90	15.70	168.10	31.78	1054.00	52.0
4824	152.40	76.20	76.20	104.6	19.00	187.50	38.13	1521.00	68.0
WG / WB系列参数 WG / WB Series Data									
WG781	78.18	38.1	33.0	45.0	10.0	97.0	17.00	313.60	16.0
WG103	103.20	49.2	46.0	60.0	13.0	125.5	23.00	539.00	26.0
WG103H	103.20	49.2	46.0	60.0	16.0	138	23.00	539.00	31.2
WG140	140.00	80.0	65.0	90.0	20.0	187.0	35.00	1176.00	59.2
WB9525	95.25	39.0	45.0	65.0	16.0	124.0	23.00	635.00	22.2
WB7900	79.00	39.0	31.5	54.0	9.5	93.5	18.50	381.00	12.8
WB7938	79.38	41.2	40.0	57.2	9.5	100.0	19.50	509.00	18.7
WB238	88.9	36.8	44.40	57.2	12.7	113.4	22.15	501.4	25.4
WB1207	127.0	68.3	63.50	88.9	15.7	158.3	31.75	1044.0	53.1

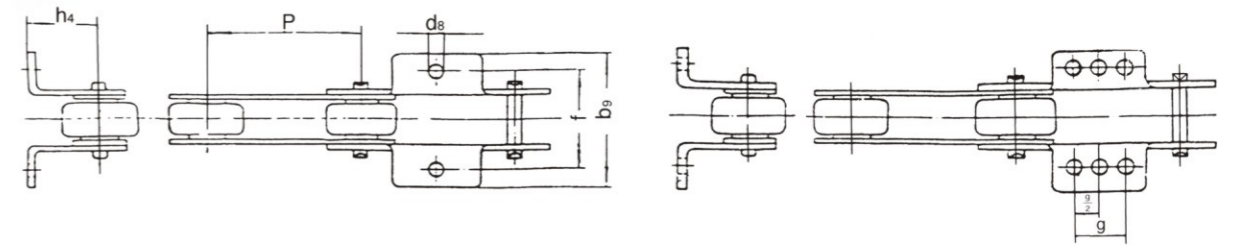
M系列输送链



链号 Chain No.	节距 Pitch						内节内宽 Width between inner plates	销轴直径 Pin dia.	套筒直径	S型滚子外径 "S" type roller dia.
	P(mm)									
M20	50	63	80	100	125	160	15	6	9	12.5
M28	63	80	100	125	160	200	17	7	10	15
M40	80	100	125	160	200	250	19	8.5	12.5	18
M56	80	100	125	160	200	250	23	10	15	21
M80	100	125	160	200	250	315	27	12	18	25
M112	125	160	200	250	315	400	31	15	21	30
M160	160	200	250	315	400	500	36	18	25	36
M224	200	250	315	400	500	630	42	21	30	42
M315	200	250	315	400	500	630	47	25	36	50
M450	250	315	400	500	630	800	55	30	42	60
M630	250	315	400	500	630	800	65	36	50	70
M900	315	400	500	630	800	1000	76	44	60	85

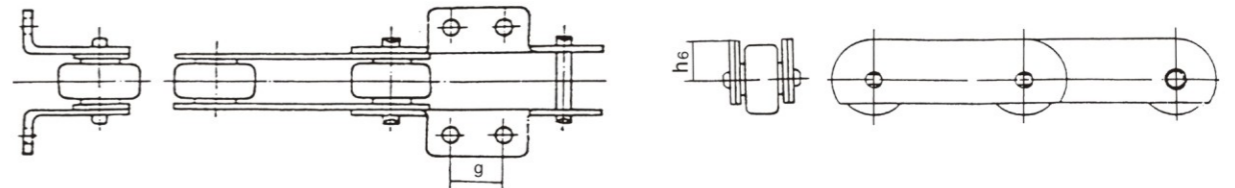
链号 Chain No.	P型滚子外径 "P" type roller dia.	F型滚子 "F" type roller		链板高度 Height of plate	链板厚度 Thickness of plate	销轴长度 Length of pin	抗拉荷载 Breaking load
		边缘直径 dia.	边缘宽度 Flange width				
M20	25	35	3.5	19	2.5	35	20
M28	30	40	4	21	3	40	28
M40	36	45	4.5	26	3.5	45	40
M56	42	55	5	31	4	52	56
M80	50	65	6	36	5	62	80
M112	60	75	7	41	6	73	112
M160	70	90	8.5	51	7	85	160
M224	85	105	10	62	8	98	224
M315	100	125	12	72	10	112	315
M450	120	150	14	82	12	135	450
M630	140	175	16	105	14	154	630
M900	170	210	18	123	16	180	900

输送链附件



K1型-单孔弯附板  
K1 Type

K3型-三孔弯附板  
K3 Type

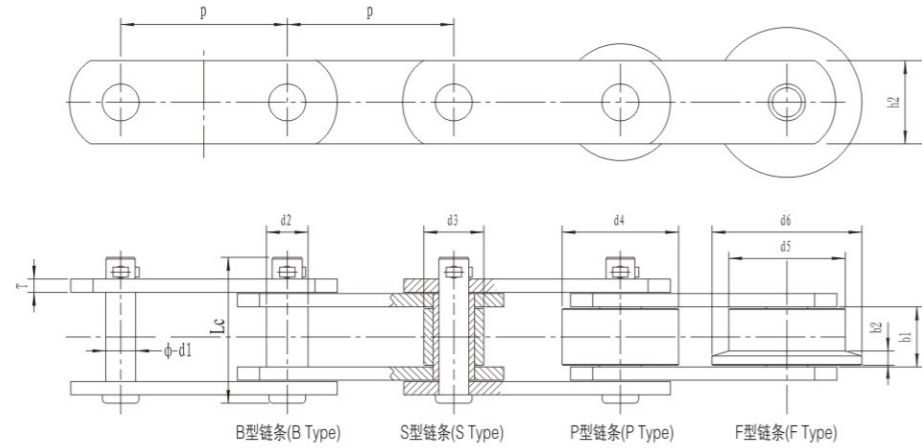


K2型-双孔弯附板  
K2 Type

H型-加高附板  
H Type

链号 Chain No.	K型 "K" type										H型 Deep link	
	d8 (mm)	h4 (mm)	f (mm)	b9 (mm)	孔距 Distance of holes		孔距 Distance of holes		孔距 Distance of holes			H6 (mm)
					p (mm)	g (mm)	p (mm)	g (mm)	p (mm)	g (mm)		
M20	6.6	16	54	84	63	20	80	35	100	50	16	
M28	9.0	20	64	100	80	25	100	40	125	65	20	
M40	9.0	25	70	112	80	20	100	40	125	65	22.5	
M56	11.0	30	88	140	100	25	125	50	160	85	30	
M80	11.0	35	96	160	125	50	160	85	200	125	32.5	
M112	14.0	40	110	184	125	35	160	65	200	100	40	
M160	14.0	45	124	200	160	50	200	85	250	145	45	
M224	18.0	55	140	228	200	65	250	125	315	190	60	
M315	18.0	65	160	250	200	50	250	100	315	155	65	
M450	18.0	75	180	280	225	85	315	155	400	240	80	
M630	24.0	90	230	380	315	100	400	190	500	300	90	
M900	30.0	110	280	480	315	65	400	155	500	240	120	

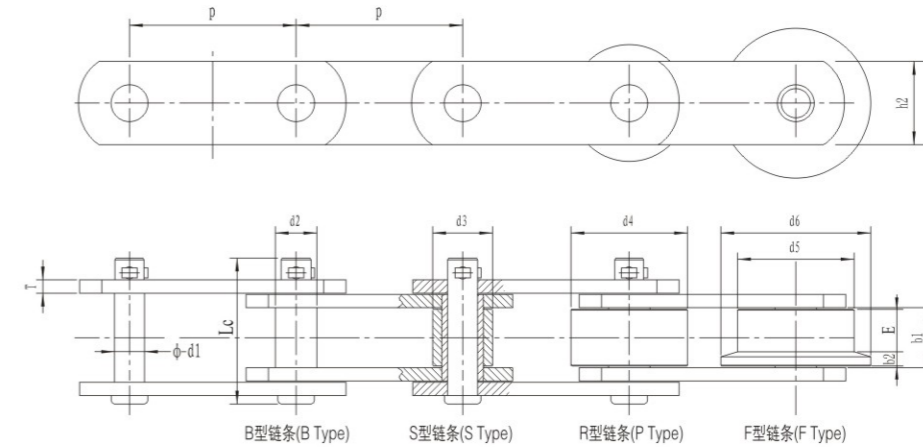
## FV系列输送链



链号 Chain No.	节距 Pitch P (mm)	尺寸参数 Dimension chart						
		b1(min) (mm)	d1(max) (mm)	d2(max) (mm)	d3(max) (mm)	d4(max) (mm)	d5(max) (mm)	d6(max) (mm)
FV40	40, 63, 100	18	10	15	20	32	40	48
FV63	63, 100, 125, 160	22	12	18	26	40	50	60
FV90	63, 100, 125, 160, 200, 250	25	14	20	30	48	63	73
FV112	100, 125, 160, 200, 250	30	16	22	32	55	72	87
FV140	100, 125, 160, 200, 250, 315	35	18	26	36	60	80	95
FV180	125, 160, 200, 250, 315, 400	45	20	30	42	70	100	120
FV250	125, 160, 200, 250, 315, 400	55	26	36	50	80	125	145
FV315	160, 200, 250, 315, 400	65	30	42	60	90	140	170
FV400	160, 200, 250, 315, 400	70	32	44	60	100	150	185
FV500	160, 200, 250, 315, 400, 500	80	36	50	70	110	160	195
FV630	200, 250, 315, 400, 500	90	42	56	80	120	170	210

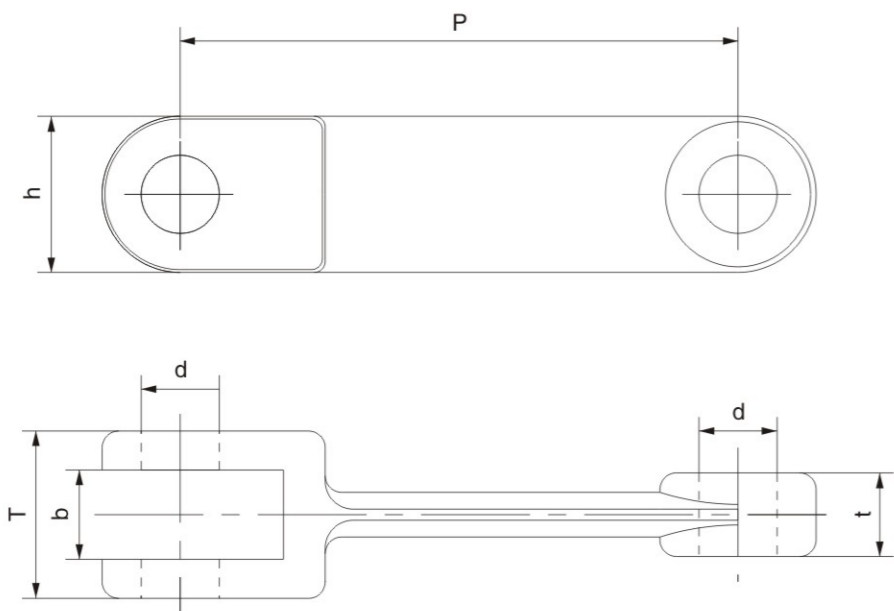
链号 Chain No.	尺寸参数 Dimension chart					抗拉荷载 Breaking load
	F型链条轮缘宽度 b2(mm)	h2 (mm)	Lc(max) (mm)	L(max) (mm)	T (mm)	单排 Q(min) (KN)
FV40	4	26	44	37	3	40
FV63	5	30	55	46	4	63
FV90	6.5	35	62	53	5	90
FV112	7.5	40	72	63	6	112
FV140	9	45	80	68	6	140
FV180	13	50	100	86	8	180
FV250	15	60	114	98	8	250
FV315	18	70	133	117	10	315
FV400	20	70	151	131	12	400
FV500	21	80	161	141	12	500
FV630	22	100	173	153	12	630

## RF系列输送链



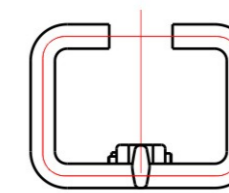
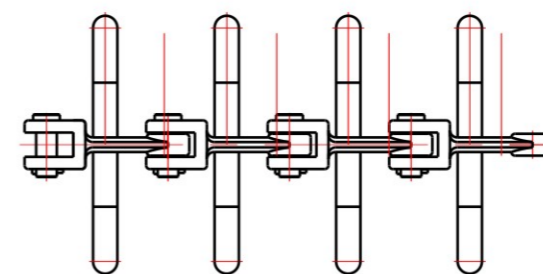
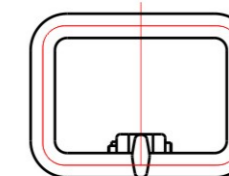
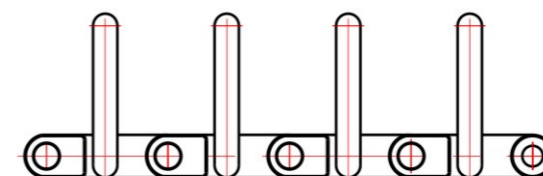
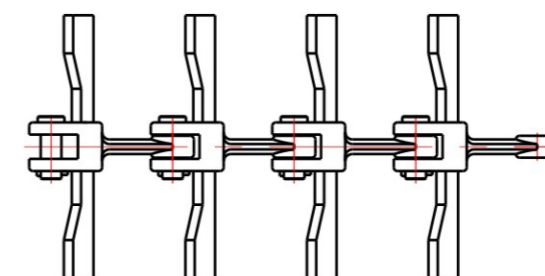
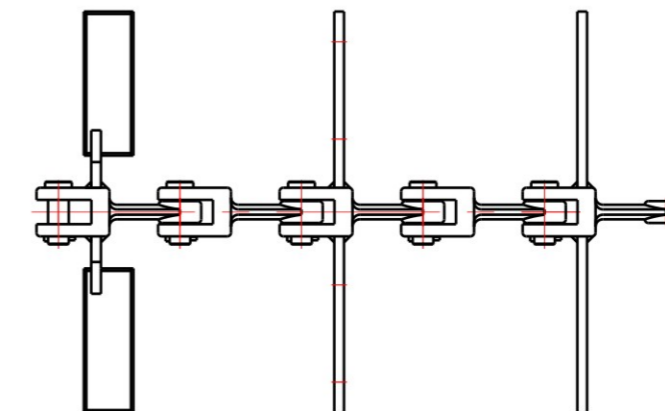
链号 Chain No.	节距 Pitch P (mm)	滚子 Roller			链板 Plate h2 (mm)	销 Pin d1 (mm)	内节内宽 Width between link plates b1 (mm)	平均抗拉强度 Average tensile strength KN (kgf)		
		R型 R type d4 (mm)	F型 F type d5 (mm)	S型 S type E (mm)						
RF03075 RF03100	75 100	31.8	31.8	12	15.9	22	3.2	8.0	16.1	29 (3000)
RF430	101.6	38.1	-	-	20.1	25.4	4.8(5.0)	9.7	22.6	54 (5500)
RF05075 RF05100 RF05150	75 100 150	40	40	14	22.2	32	4.5	11.3	22	69 (7000)
RF204	66.27	-	-	-	22.2	28.6	6.3(6.0)	11.3	27	78 (8000)
RF450	101.6	44.5	44.5	18	22.2	28.6	6.3(6.0)	11.3	27	78 (8000)
RF08150	150	44.5	44.5	18	22.2	28.6	6.3(6.0)	11.3	27	78 (8000)
RF650	152.4	50.8	50.8	20	25.8	38.1	6.3(6.0)	11.3	30.2	78 (8000)
RF10100 RF10150	100 150	50.8	50.8	- 20	29	38.1	6.3(6.0)	14.5	30	113 (11500)
RF214	101.6	44.5	-	-	31.8	38.1	7.9	15.9	31.6	127 (13000)
RF205	78.11	-	-	-	31.8	38.1	7.9	15.9	37.1	127 (13000)
RF6205	152.4	57.2	57.2	25	34.9	44.5	7.9	15.9	37.1	186 (19000)
RF12200 RF12250	200 250	65	65	24	34.9	44.5	7.9	15.9	37.1	186 (19000)
RF212	152.4	69.9	-	-	40.1	50.8	9.5(10)	19.1	37.1	245 (25000)
RF17200 RF17250 RF17300	200 250 300	80	80	34	40.1	50.8	9.5(10)	19.1	51.4	245 (25000)
RF26200 RF26250 RF26300 RF26450	200 250 300 450	-	-	-	44.5	63.5	9.5(10)	22.2	57.2	314 (32000)
RF36250 RF36300 RF36450 RF36600	250 300 450 600	-	-	-	50.8	76.2	12.7	25.4	66.7	475 (48500)
RF52300 RF52450 RF52600	300 450 600	140	140	49	57.2	76.2	16	31.8	77	500 (51000)
RF60300 RF60350 RF60400	300 350 400	140	140	49	-	90	12.7	35.0	77	500 (51000)

模锻链

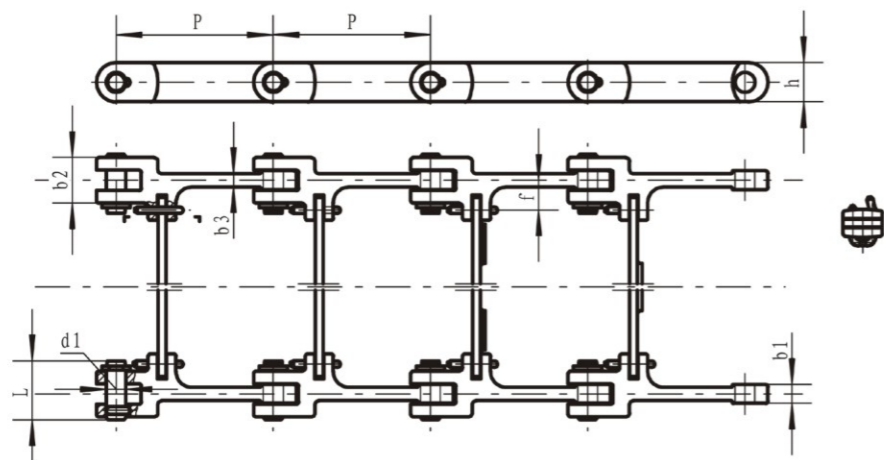


序号	型号	P	T	t	b	d	h	抗拉强度
		mm						KN
1	S16	100	30	14	16	Φ14	27	150
2	Z16	100	40	18	20	Φ17	35	260
3	S20	125	34	16	18	Φ17	33	250
4	Z20	125	50	24	26	Φ20	45	350
5	S25	160	48	23	25	Φ20	39	350
6	Z25	160	58	28	30	Φ25	55	550
7	3002	142	46	22	24	Φ25	50	350
8	3003	142	64	29	31	Φ25	50	500
9	3006	200	65	30	33	Φ32	70	750
10	Ms55	200	80	35	38	Φ28	70	650
11	MI40	200	48	23	25	Φ25	58	500
12	Ms63	200	70	30	33	Φ32	80	900
13	MG20	200	70	27	29	Φ35	70	850

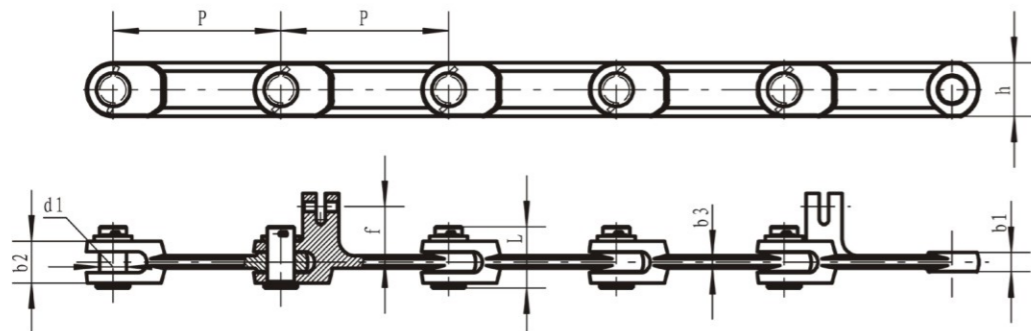
注：1、材质根据用户需要选用：45钢、40Cr、20CrMnTi  
2、除表中型号外，还承接其它非标链节



模锻刮板链

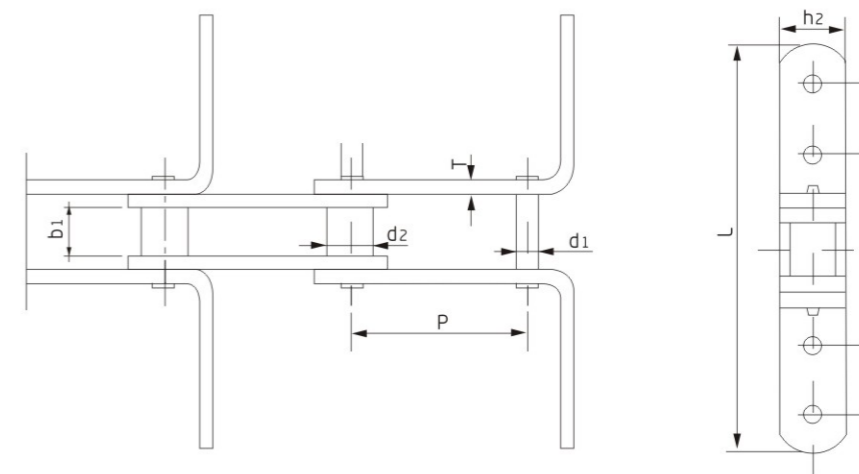
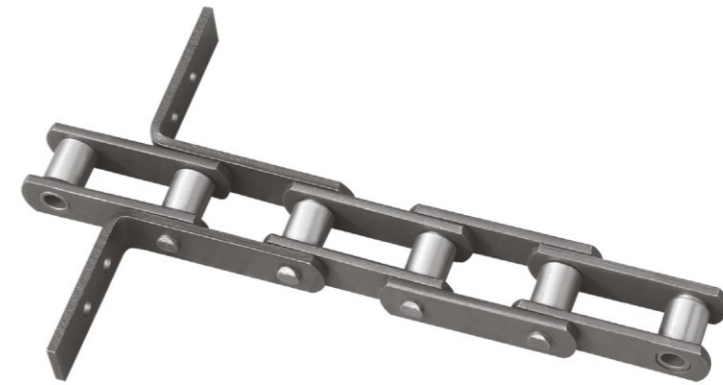


P	d1(mm)	h(mm)	b1(mm)	b2(mm)	b3(mm)	f(mm)	L(mm)
200	25	50	24	58	17	38	75



P	d1(mm)	h(mm)	b1(mm)	b2(mm)	b3(mm)	f(mm)	L(mm)
200	32	64	23	50	15	66	75

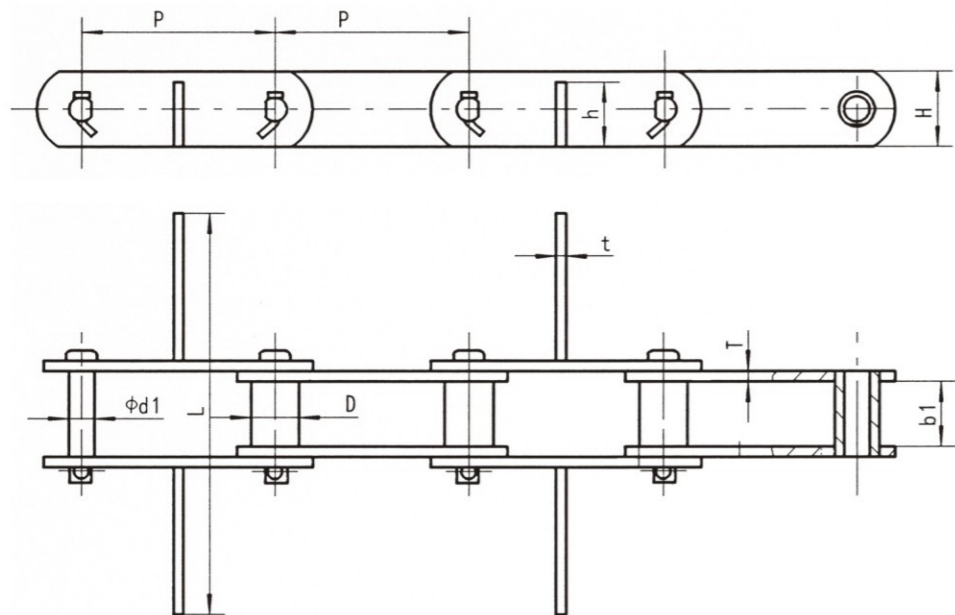
轻型粮机链



链号 Chain No.	节距 Pitch	内节内宽 Inner width of inner link	销轴直径 Diameter of pin	套筒直径	滚子直径 Diameter of roller	链板高度 Height of sidebar	链板厚度 Thickness of sidebar	刮板宽度 Width of scraper	刮板高度 Height of scraper	抗拉强度 Tensile strength	重量 Weighth
	P (mm)	b1(min) (mm)	d1 (mm)	d2 (mm)	d3(max) (mm)	h2 (mm)	T (mm)	L (mm)	h2 (mm)	Q(min) (KN)	kg/m
LTF665	66.5	26.5	12		22	30	6	164	30	80	6.1
GLR66.5(6)	66.5	26.5	12	16.23	22.23	30	6	130	60	80	5.9
GLF66.5(6) × 230	66.5	26.5	12	-	22.23	30	6	230	30	80	6.5
GLF66.5(6) × 270	66.5	26.5	12	-	22.23	30	6	270	30	80	6.9
GLF100(6) D × 225	100	38	16	21.6	36	40	6	225	40	112	
GLF100(6) D × 294	100	38	16	21.6	36	40	6	294	40	112	
GLF125(6) × 235	125	32.5	14.27	20	28.58	40	6	235	40	100	
GL125(8) D × 295	125	40	20	30	40	60	8	295	60	220	
GL125(8) D × 370	125	40	20	30	40	60	8	370	60	220	
GLF160(8) D × 385	160	36	17.81	24.5	36	50	8	385	50	160	
GLF200(8) D × 467	200	42	20	30	40	60	8	467	60	220	
TGSS20	100	28	16	22	-	36	6	170	36	115	7
TGSS25	100	28	16	22	-	35	6	230	36	115	7.5
TGSS32	125	36	18	25	-	51	8	300	51	220	12
TGSS40	200	42	21	30	42	62	8	370	62	250	17
TGSS50	200	48	25	36	50	72	10	480	72	4400	25.4
TGSS63	200	48	25	36	50	72	10	600	72	400	27.6
GSSMS32	66.27	27	15.88	11.1	23	28.6	4	270	28.6	106.7	5.3
GSSMS40	66.27	27	15.88	11.1	23	31.5	7.6	359	31.5	124.6	8.7

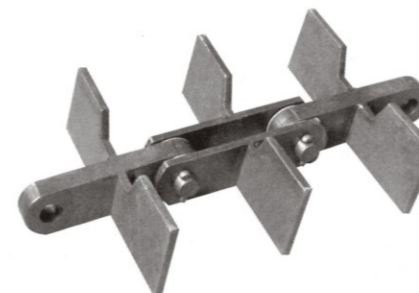


## 焊接轻型粮机链



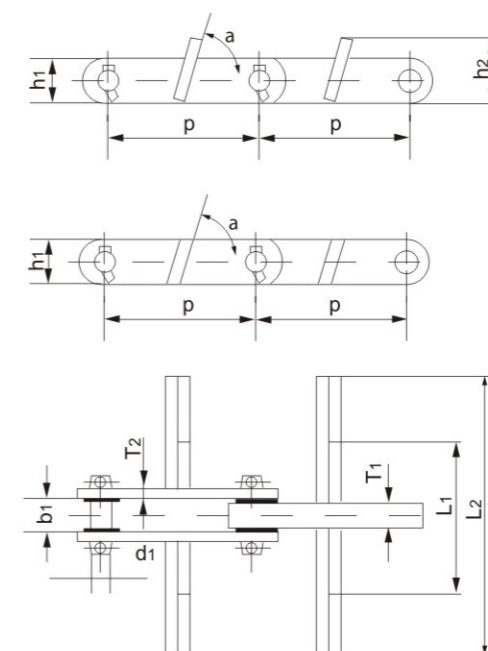
链号 Chain No.	节距 Pitch	滚子直径 Diameter of roller	内节内宽 Inner width of inner link	销轴直径 Diameter of pin	链板高度 Height of sidebar	链板厚度 Thickness of sidebar	刮板高度 Height of scraper	刮板厚度 Thickness of scraper	横向距离 L	重量 Weight
	P (mm)	D (mm)	b (mm)	d (mm)	H (mm)	T (mm)	h (mm)	t (mm)	(mm)	kg/m
MS16	100	28	24	17	35	6	30	6	140	8.1
ZYC18	101.6	26.5	27	11.5	35	6	35	6	75.5	5.9
MC16	100	28	24	17	35	6	110	16	145	11.6
LZJ1	101.6	26.5	27	11.5	35	6	35	6	151	6.1
MS20	125	32	28	20	42	7	36	8	180	10.5
MSH20	101.6	26.5	27	11.5	35	6	35	6	180	6.9
MC20	125	32	28	20	42	7	120	18	185	14.7
BMMC20	101.6	26.5	27	11.5	35	6	35	6	180	6.8
MS25	160	40	35	24	50	8	45	10	220	14.7
MC25	160	40	35	24	50	8	145	20	230	18.6
BMMC25	101.6	26.5	27	11.5	35	6	145/35	20/6	230/220	6.3
MS32	200	48	45	20	55	8	45	8	290	18

## 块式刮板链



埋刮板链适用于粉末状、颗粒状及小块状的水泥、粉尘、谷物、砂石和煤炭等散状物料的运输设备。

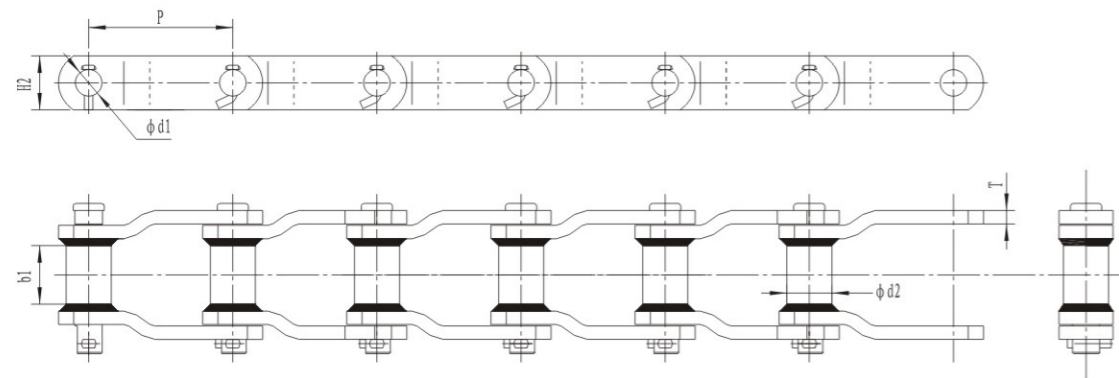
The Buried Scraper Chain is suitable for conveyor device used in bulk materials such as cement, powder, grain powder, sand and coal in powder, pellet or small lump styles.



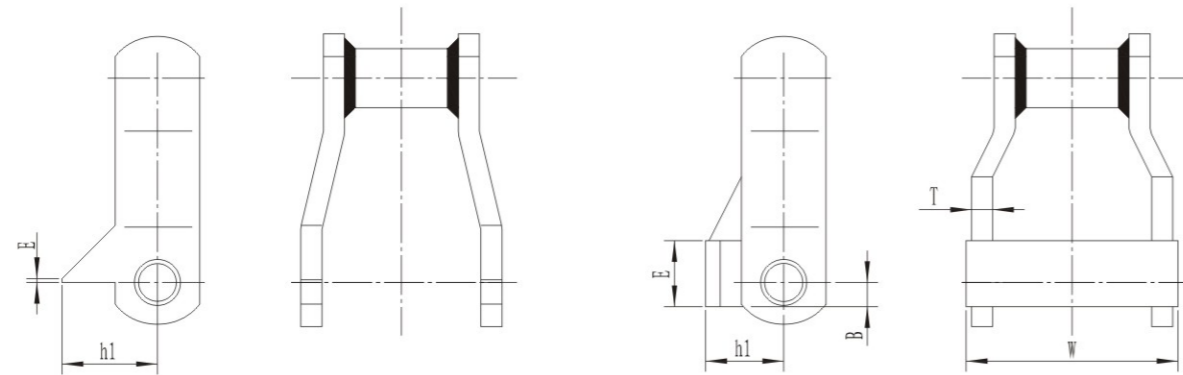
链号 Chain No.	节距 Pitch P (mm)	外节内宽 Inner width of outer link b1(min) (mm)	销轴直径 Diameter of pin d2 (mm)	链板高度 Height of sidebar h1 (mm)	链板厚度 Thickness of sidebar		刮板尺寸 Dimensions of scraper				抗拉强度 Tensile strength Q(min) (KN)
					内链板 Inner sidebar T1(mm)	外链板 Outer sidebar T2(mm)	L1 (mm)	L2 (mm)	h2 (mm)	α (°)	
GS31F	152.4	32.5	22	45	25.4	10	106	280	65.5	75	224.0
GS43F	152.4	34.0	22	45	28.0	12	115	400	80.5	90	224.0
DC200	152.4	32.5	22	45	25.4	10	-	160	-	75	224.0
DC250	152.4	32.5	22	45	25.4	10	106	210	65.5	75	224.0
DC310	152.4	32.5	22	45	25.4	10	106	270	65.5	75	224.0
DC450	200.0	41.0	22	80	35.0	14	150	400	121.3	75	600.0
DC250A	152.4	32.5	22	45	25.4	10	-	210	-	75	224.0
DC310A	152.4	32.5	22	45	25.4	10	-	270	-	75	224.0

## 焊接系列刮板链

### 焊接弯板链及附件

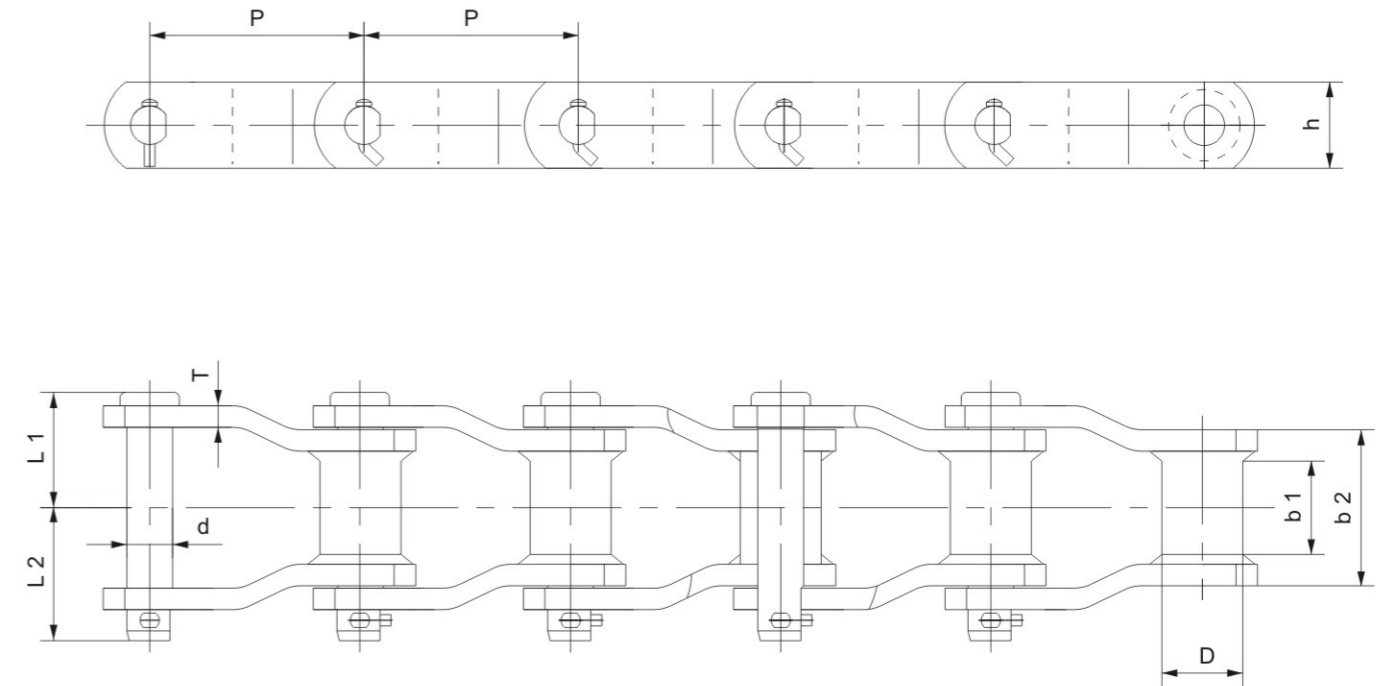


链号 Chain No.	节距 Pitch	销轴直径 Diameter of pin	套筒外径	链板高度	小端内宽	链板厚度	抗拉强度	重量
	P (mm)	d1 (mm)	d2 (mm)	h2 (mm)	b1 (mm)	T (mm)	(KN)	(kg/m)
WH78C	66.27	12.7	22.23	28.4	28.4	6.4	150	5.9
WH82C	78.1	14.29	27/25.4	32	31.8	6.4	160	8.3/8
WH124	101.6	19.05	36.5	38.1	41.3	9.5	300	12.2
WH132	153.67	25.25	44.45	50.8	76.2	12.7	378	20.5
WH150	153.67	25.25	44.45	63.5	77.1	12.7	398	24.5
WH155	153.67	28.42	44.45	63.5	73.6	14.27	411	27.7
WH157	153.67	28.52	44.45	63.5	76.4	15.88	552	29.1



链号 Chain No.	节距 Pitch	销轴直径 Diameter of pin	套筒外径	链板高度	小端内宽	链板厚度	附件高度	附件宽度	附件位置	附件厚度
	P (mm)	d1 (mm)	d2 (mm)	H (mm)	b1 (mm)	T (mm)	h1 (mm)	E (mm)	B (mm)	T (mm)
ADWH155Z	153.67	28.37	44.45	63.5	69.9	14.2	71.75	5	0	14.2
ADWH155D	153.67	28.37	44.45	63.5	69.9	14.2	58.75	50	18.3	12

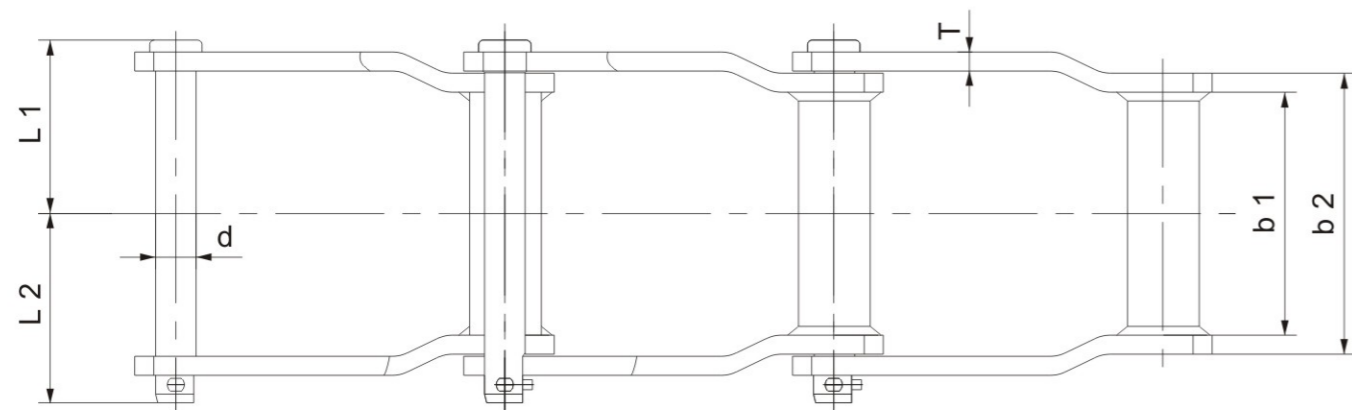
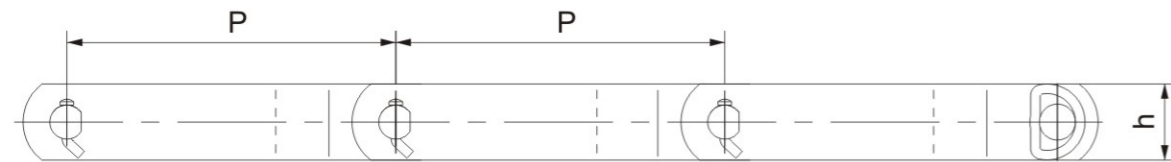
## 窄系列焊接弯板链



链号 Chain No.	节距 Pitch	窄端 Narrow and		套筒外径 Bush diameter	链板 Sidebars		销轴 Pin			最小抗 拉强度 Ultimate tensile strangth	许用工 作载荷 Rated working load	每米 重量 weighi per meter
		b <sub>1</sub>	b <sub>2</sub>		h mm	T mm	d mm	L <sub>1</sub> mm	L <sub>2</sub> mm			
		(min) mm	(max) mm									
WHX124	101.8	38.1	71.5	36.55	38.1	9.5	19.05	51.8	56.2	320	32.7	12.5
WHX124HD	103.2	38.1	76.3	41.28	50.8	12.7	25.4	59.4	64.3	540	66.8	20.7
WHX111	120.9	50.8	85.6	36.55	38.1	9.5	19.05	58.7	64.5	320	39.5	12.5
WHX111HD	120.9	57.15	91.96	36.53	50.8	12.7	19.05	65.5	69.5	320	39.5	19.1
WHX132	153.67	69.85	111.6	44.5	50.8	12.7	25.4	77.3	81.7	540	66.8	20.4
WHX132HD	153.67	69.85	119.03	44.5	50.8	15.9	25.4	84	89.7	540	69.3	24.8
WHX106	152.4	38.1	71.5	36.55	38.1	9.5	19.05	51.8	56.2	320	32.7	9.7
WHX150	153.67	69.85	111.6	44.5	63.5	12.7	25.4	77.3	81.7	540	66.8	24.5
FWHX150	153.67	69.85	110	44.5	65	12	25	75	81	520	64.5	24.7
WHX155	153.67	69.85	112.1	44.5	63.5	14.3	28.4	77.4	87.5	660	77.8	24.7
WHX157	153.67	69.85	118.1	44.5	63.5	15.9	28.55	81.4	92.6	750	80.9	29.3
WHX159	155.58	73	118.1	50.8	76.2	15.9	31.5	83	84.8	930	90	38.4
WHX4855	304.8	69.85	116.9	44.5	63.5	15.9	31.55	81.8	84.3	780	76.8	22.5
WHX4859	304.8	73	118.1	50.8	76.2	15.9	31.5	83	84.8	930	87.5	28.9

所有零件经过热处理硬化，销轴表面感应硬化处理  
All components of chain have been hardened through heat treatment and pin has been surface induction hardened.

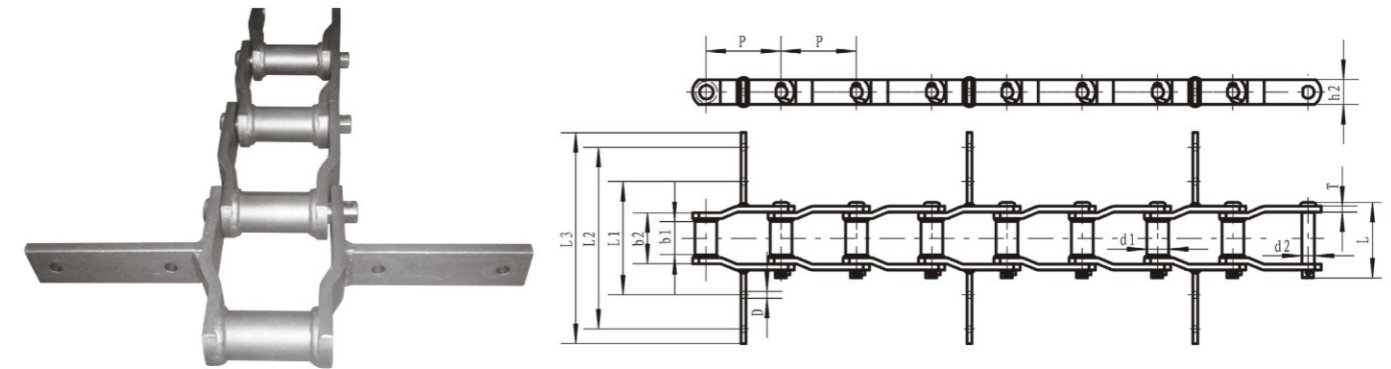
宽系列焊接弯板链



链号 Chain No.	节距 Pitch P mm	窄端 Narrow and		链板 Sidebars		销轴 Pin			最小抗拉强度 Ultimate tensile strength Fu (min) kN	许用工作载荷 Rated working load kN	每米重量 weight per meter q kg/m
		b <sub>1</sub> (min) mm	b <sub>2</sub> (max) mm	h mm	T mm	d mm	L <sub>1</sub> mm	L <sub>2</sub> mm			
WDH104	152.4	104.6	136.9	38.1	9.5	19.05	84.2	91	310	44.5	12
WDH110	152.4	228.6	263.9	38.1	9.5	19.05	147.8	154.5	310	44.5	16.9
WDH120	152.4	222.2	260.4	50.8	12.7	22.23	150.6	157	500	66.8	28.7
WDH112	203.2	228.6	263.9	38.1	9.5	19.05	147.8	154.5	310	44.5	14.1
WDH116	203.2	325.8	358.7	44.5	9.5	19.05	195.4	201.8	320	51.2	18.8
WDH118	203.2	334	378.45	50.8	12.7	22.23	210.7	217.2	500	66.8	32.1
WDH480	203.2	282.4	324.1	50.8	12.7	22.23	182.2	188.7	500	66.8	26.9
WDH580	203.2	282.4	324.1	50.8	12.7	25.4	181.5	189.3	540	91.2	29.2
WDH680	203.2	282.4	330.2	50.8	16	25.4	190.7	198.5	540	91.2	32.5
WDH2210	155.85	228.6	263.9	38.1	9.5	19.05	147.8	154.5	310	44.5	16.70
WDH2380	207.29	282.4	324.1	50.8	12.7	22.23	182.2	188.7	500	66.8	26.6

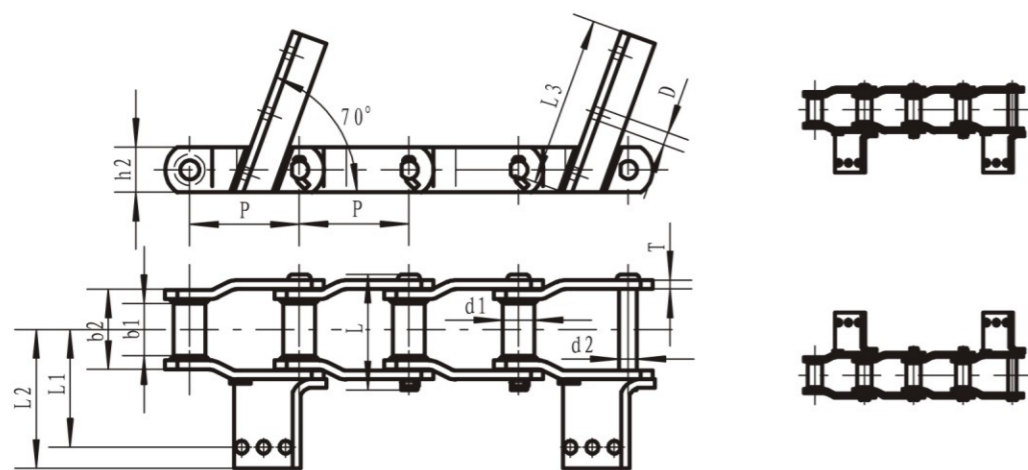
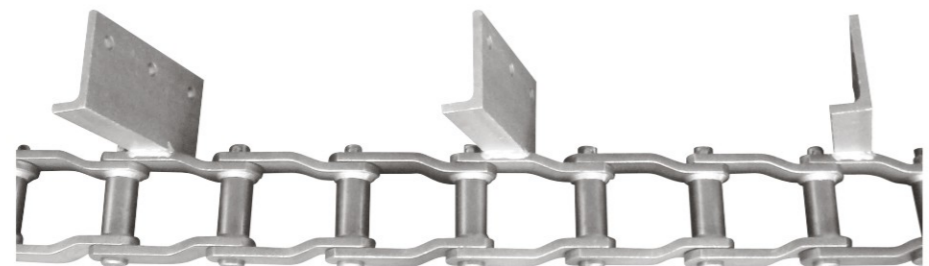
链条销轴经过热处理硬化  
All pins of chain have been hardened through heat treatment.

焊接系列刮板链

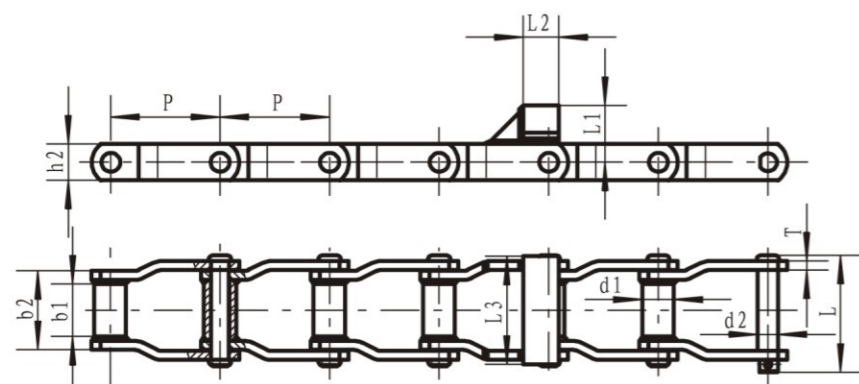


链号 Chain No.	节距 Pitch P (mm)	套筒外径 Outer diameter of bushing d2 (mm)	销轴直径 Diameter of pin d1(max) (mm)	链板高度 Height of sidebar h2(max) (mm)	小端内宽 Inner width of small end b1 (mm)	链板厚度 Thickness of sidebar T (mm)	通道宽度 F (mm)	刮板厚度 T1 (mm)	刮板孔径 D (mm)	抗拉强度 Tensile strength (KN)
MSW200	78.1	25.4	14.29	32	31.8	6.4	160	8	14	100.1
MCW250	78.1	25.4	14.29	32	31.8	6.4	175	10	14	100.1
MSW315	78.1	25.4	14.29	32	31.8	6.4	265	10	14	100.1
MSW400	78.1	25.4	14.29	32	31.8	6.4	350	10	14	100.1
GSMS200	78.1	27	14.29	32	31.8	6.4	170	3	9	132
GSMS250	78.1	27	14.29	32	31.8	6.4	220	3	9	132
GSMS320	78.1	27	14.29	32	31.8	6.4	270	3	9	132
GSMS400	78.1	27	14.29	32	31.8	6.4	350	3	9	132
JDMS200	78.1	27	14.29	31.8	38.1	6	170	8	10	132
JDMS250	78.1	27	14.29	31.8	38.1	6	220	10	10	132
JDMS400	78.1	27	14.29	31.8	31.8	6.4	350	9.5	14	100.1
DTMC250	101.6	31.75	19.05	38.1	41.28	9.5	210	9.5	12	300
MCW315	101.6	36.5	19.05	38.1	41.2	9.5	230	10	14	300
MSW400	101.6	36.5	19.05	38.1	41.2	9.5	350	10	14	300
MCW400	101.6	36.5	19.05	38.1	41.2	9.5	310	10	14	300
MSW500	101.6	31.75	19.05	38.1	41.2	9.5	450	10	14	300
GSMS320	101.6	31.75	19.05	38.1	41.2	9.5	270	5	11	280
GSMC320	101.6	31.75	19.05	38.1	41.2	9.5	250	5	12	280
GSMS400	101.6	31.75	19.05	38.1	41.2	9.5	330	5	11	280
GSMC400	101.6	31.75	19.05	38.1	41.2	9.5	334	10	12	280
GSMS500	101.6	31.75	19.05	38.1	41.2	9.5	430	5	11	280
GSMC500	101.6	31.75	19.05	38.1	41.2	9.5	430	10	12	280
JDMS400	101.6	31.75	19.05	38.1	41.28	9.5	330	9.5	12	300
MSW500	153.67	44.45	25.2	50.8	76.2	12.7	450	12	14	378.1
MCW500	153.67	44.45	25.2	50.8	76.2	12.7	400	12	14	378.1
MSW630	153.67	44.45	25.2	50.8	76.2	12.7	560	12	14	378.1
MCW630	153.67	44.45	25.2	50.8	76.2	12.7	540	12	14	378.1
MCW800	153.67	44.45	25.2	50.8	76.2	12.7	700	12	14	511
GSMS500	153.67	44.45	25.2	50.8	72.1	12.7	430	6	13	511
GSMC500	153.67	44.45	25.2	50.8	72.1	12.7	426	12	14	511
GSMS630	153.67	44.45	25.2	50.8	72.1	12.7	560	6	13	511
GSMC630	153.67	44.45	25.2	50.8	72.1	12.7	556	12	14	511
GSMS800	153.67	44.45	25.2	50.8	72.1	12.7	720	6	13	511
GSMC800	153.67	44.45	25.2	50.8	72.1	12.7	734	12	14	511
GSMS1000	153.67	44.45	25.2	50.8	72.1	12.7	920	6	13	511
JDMS500	153.67	44.45	25.2	50.8	59	10	430	10	14	356
JDMS630	153.67	44.45	25.2	50.8	66	10	560	10	14	356
JDMS800	153.67	44.45	25.2	50.8	68	12	730	12	14	511
JDMS1000	153.67	44.45	25.2	60	73	12	930	12	14	543
JDMS1200	153.67	44.45	25.2	60	66	12	526	12	14	511

### 焊接系列刮板链

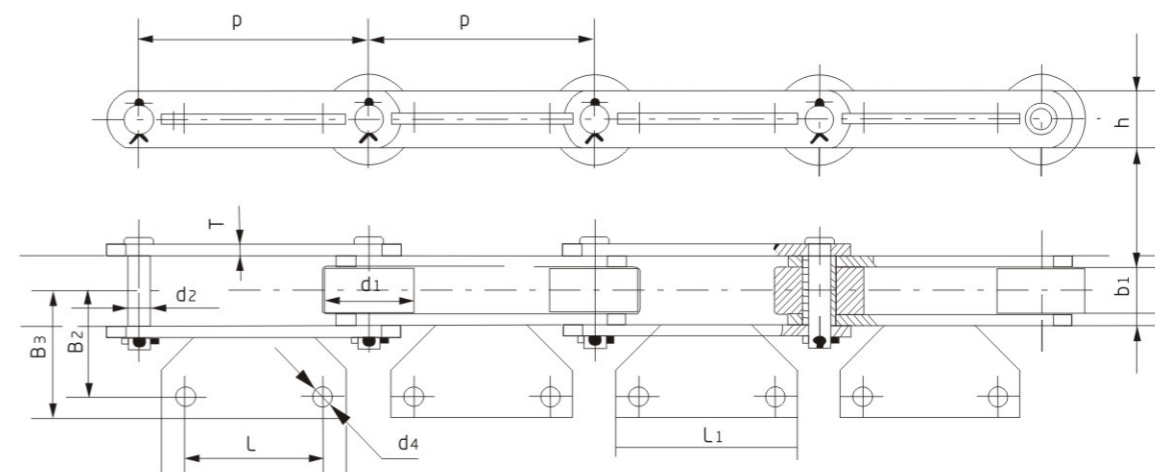


链号 Chain No.	节距 Pitch P (mm)	套筒外径 Outer diameter of bushing d1 (mm)	销轴直径 Diameter of pin d2(max) (mm)	链板高度 Height of sidebar h2(max) (mm)	小端内宽 Inner width of small end b1 (mm)	小端外宽 Outer width of small end b2 (mm)	链板厚度 Thickness of sidebar T (mm)	刮板尺寸 Dimensions of scraper				抗拉强度 Tensile strength Q(min) (KN)
								L1 (mm)	L2 (mm)	L3 (mm)	D (mm)	
WH150	153.67	44.45	28.57	63.5	73	111.76	12.7	163.4	193.4	240	18	542



链号 Chain No.	节距 Pitch P (mm)	套筒外径 Outer diameter of bushing d1 (mm)	销轴直径 Diameter of pin d2(max) (mm)	链板高度 Height of sidebar h2(max) (mm)	小端内宽 Inner width of small end b1 (mm)	小端外宽 Outer width of small end b2 (mm)	链板厚度 Thickness of sidebar T (mm)	刮板尺寸 Dimensions of scraper			抗拉强度 Tensile strength Q(min) (KN)
								L1 (mm)	L2 (mm)	L3 (mm)	
WH132	153.67	44.5	25.4	63.5	73	109.7	12	85.75	50	152	356

### 烘干机输送链

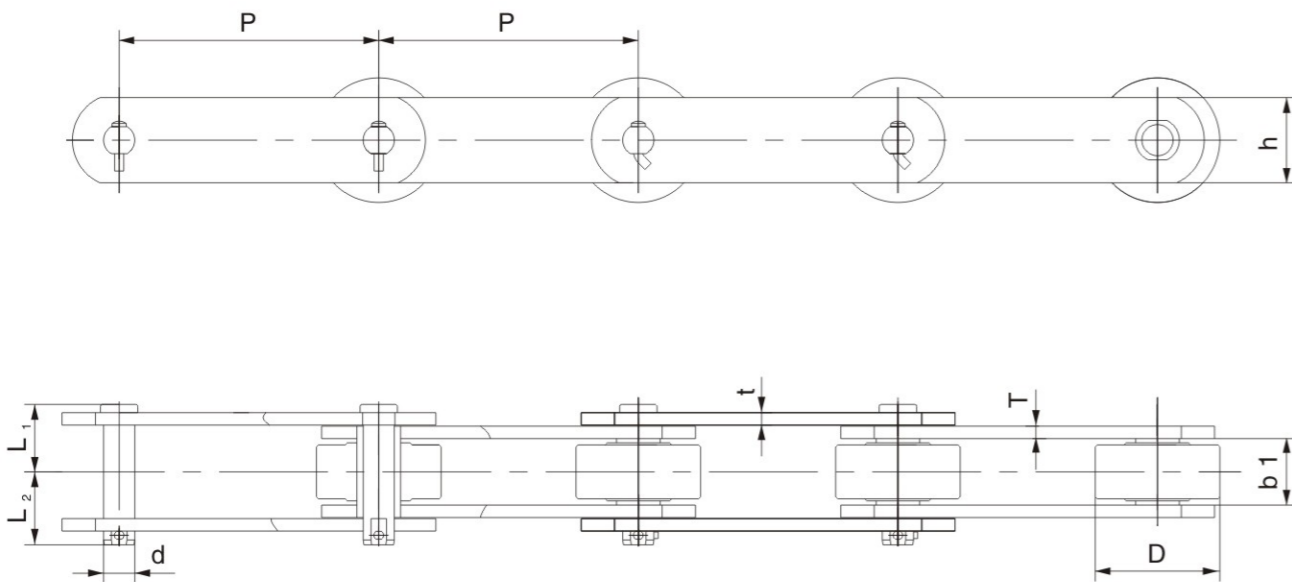


链号 Chain No.	节距 Pitch P (mm)	内节内宽 Inner width of inner link b1(min) (mm)	滚子直径 Diameter of roller d1(max) (mm)	销轴直径 Diameter of pin d2 (mm)	链板高度 Height of sidebar h (mm)	链板厚度 Thickness of sidebar T (mm)	刮板宽度 Width of scraper B (mm)	抗拉强度 Tensile strength Q(min) (KN)
M80-100	100	25	40	10	28	6	6	65
M80-125	125	27	50	12	32	6	6	80
M80-160	160	27	50	12	36	6	5	90
M80-160H	160	32	60	15	50	8	8	130
M90-200	200	40	80	18	50	10	10	210

附板尺寸 Dimensions of Attachment

链号 Chain No.	B2 (mm)	B3 (mm)	d4 (mm)	L (mm)	L1 (mm)
M80-100	50	60	9	60	80
M80-125	60	71	11	75	100
M80-160	60	71	11	80	110
M80-160H	65	78	13	80	120
M90-200	70	90	15	100	140

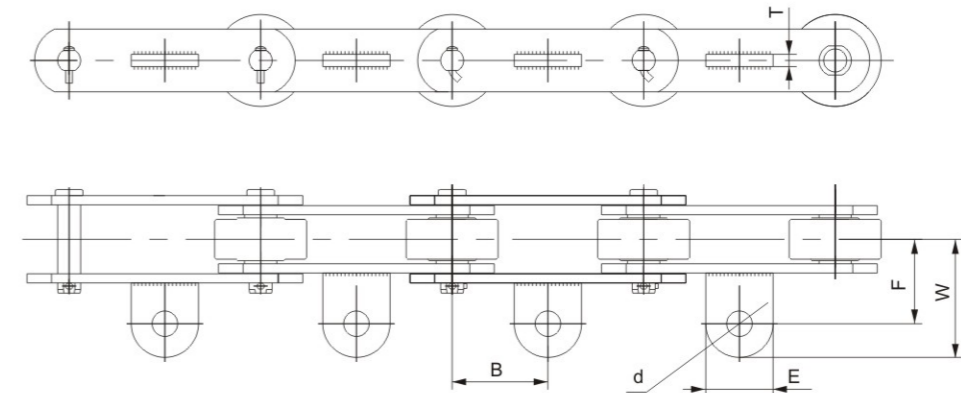
### 直板型糖机链



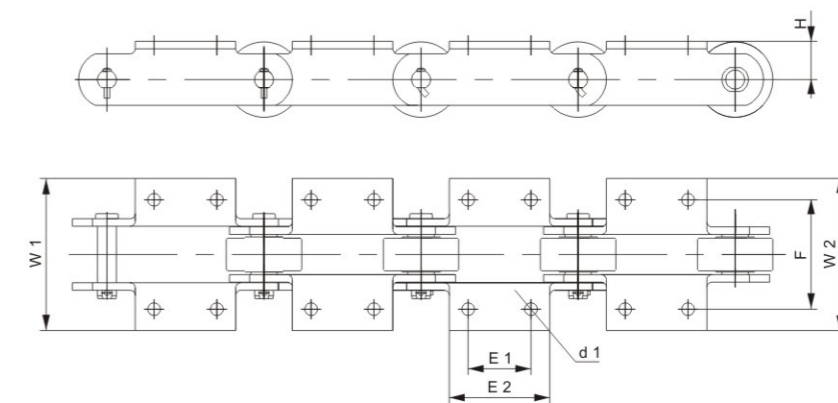
链号 Chain No.	节距 Pitch	内节内宽 Width between inner plates	滚子外径 Roller diameter	销轴 Pin			链板 Sidebars		最小抗 拉强度 Ultimate tensile strangth	每米 净量 weighi per meter
	P mm	b <sub>1</sub> (min) mm	D (max) mm	D mm	L <sub>1</sub> mm	L <sub>2</sub> mm	H mm	t/T mm	Q (min) kN	q kg/m
P77.5	77.5	36.7	31.7	16	39.5	47.5	38	8	188	10.3
0904	101.6	29.3	50.8	17.46	31.1	47.4	44.5	8	178.4	13.16
09060	152.4	37.7	69.85/76.2	18.9	45.2	49.1	50.8	9.5	250	17.2/18.36
09061	152.4	37.7	69.85	18.9	44.9	50.3	57.2	9.5	377.9	18.74
1796	152.4	37.8	76.2	22.23	44.2	52.9	57.2	9.5	444.5	19.5
			73							
09063	152.4	38	76.2	23.83	47.4	54.6	60.3	10.3	622.3	21.88
C09063	152.4	38	76.2	23.83	47.4	54.6	61.9	10.3	635	22.2
GC09063	152.4	38	76.2	23.8	46.7	56.3	63.5	10.3	600	23.67
SS996	152.4	38.1	69.85	19.05	46.83	51.6	50.8	9.5	311	17.55
DN2184	152.4	34.9	76.2	22.35	43.9	51.2	50.8	9.5	355.6	18.3
SS960	152.4	38.1	69.85	21.84	51.6	61.1	57.2	12.7	333.3	31.24
SS600	152.4	38.1	69.85	22.23	47.05	53	58.7	9.5	444.5	20.83
SS1131	152.4	38.1	76.2	19.05	46.83	61.6	50.8	9.5	208	18.6
SS1114	152.4	32.5	50.8	15.88	38.5	43.2	38.1	7.9	124.46	11.8
SS800	203.2	46.04	88.9	25.15	57.94	60.33	76.2	12.7	742.3	29.76
SS2315	228.6	43	76.2	22	49	58	9.5	63.5	274	27.23

销轴与套筒有碳钢和马氏体不锈钢两种材质  
there are two kinds of materials for pin and bushing, which are carbon steel and martensite stainless steel.

### 直板型糖机链附件

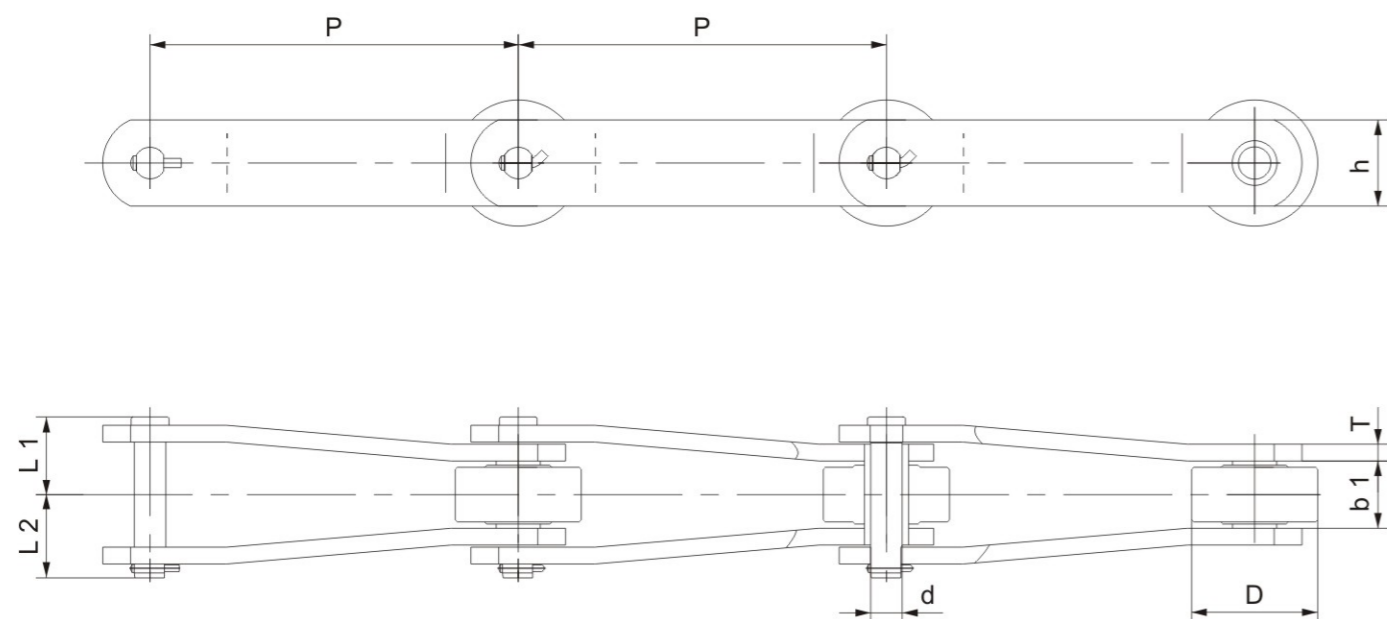


Chain No.	B mm	F mm	W mm	E mm	d mm	T mm
09060	76.2	67	87.4	45	21	15
09061	76.2	67	87.4	45	21	15
1796	76.2	67	87.4	45	21	15
GC09063	76.2	63.5	83	45	20	15.3
SS1131	76.2	65.88	91.28	50.8	17.46	15.48
DN2184	76.2	66.7	92.1/88.74	50.8/44	21	15



Chain No.	H mm	E1 mm	E2 mm	d <sub>1</sub> mm	F mm	W <sub>1</sub> mm	W <sub>2</sub> mm
0904	31.8	36.6	66.7	9.5	89	137.4	137.4
09060	41.3	76.2	114.3	13	111.1	171.5	151.1
09061	41.3	76.2	114.3	13	111.1	165.1	144.7
1796	41.3	76.2	114.3	11.1/13/14	111.1	165.1	144.7
C09063	44.5	76.2	114.3	14.3/12.7	111.1	165.1	143.1
SS996	41.4	76.2	139.7	12.7	111.25	152.4	152.4
SS1131	41.28	66.68	139.7	14.29	152.4	187.3	187.3
SS960	41.28	76.2	111.13	14.29	111.13	152.4	152.4
SS600	41.4	76.2	111.25	12.7	111.25	147.32	147.32
SS600	55.6	114.3	177.8	17.46	131.8	182.6	182.6

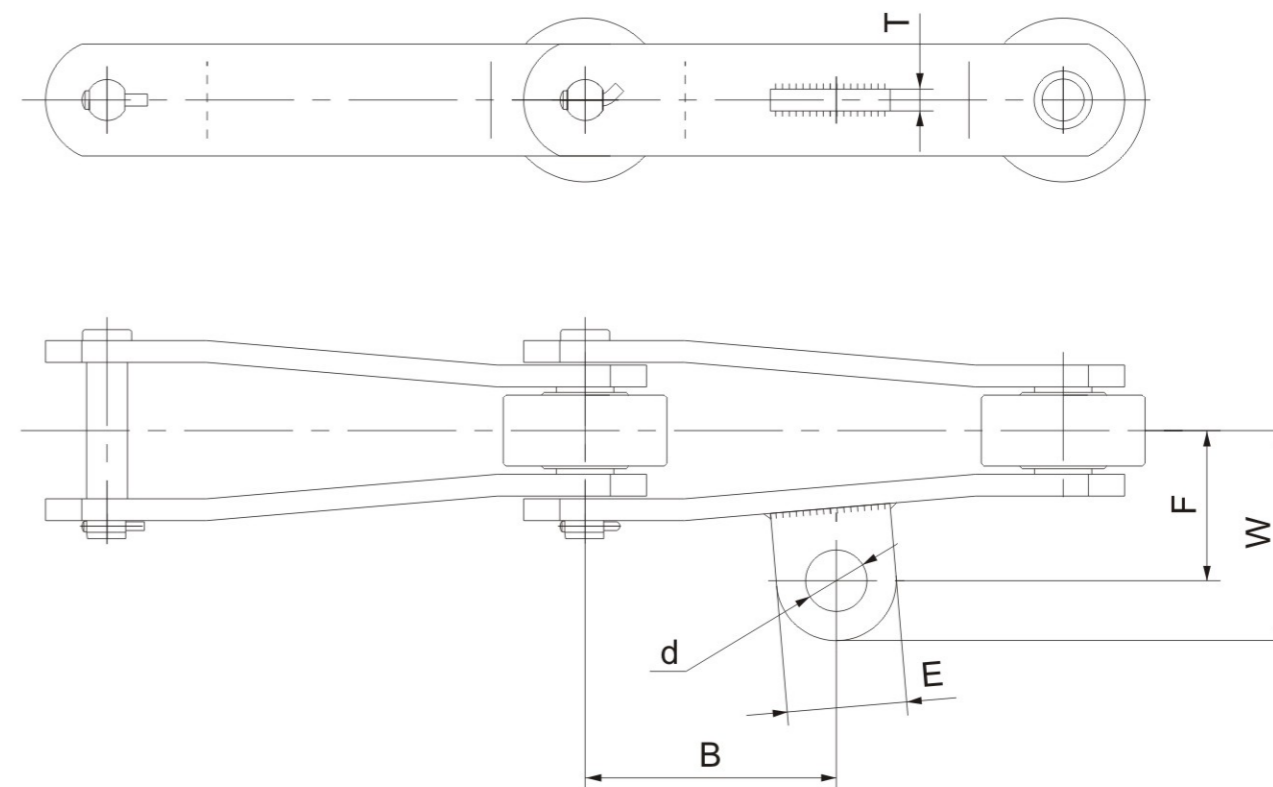
### 弯板型糖机链



链号 Chain No.	节距 Pitch	窄端内宽 Inside diameter	滚子外径 Roller diameter	销轴 Pin			链板 Sidebars		最小抗拉强度 Ultimate tensile strength	每米净量 weight per meter
	P mm	b <sub>1</sub> (min) mm	D (max) mm	D mm	L <sub>1</sub> mm	L <sub>2</sub> mm	H mm	t/T mm	Q (min) kN	q kg/m
CR09060	152.4	38.2	69.9	19.8	45	53	50.8	9.5	303.3	17.5
CR09063	152.4	38	76.2	23.83	47.1	54.9	60.3	10.3	622.3	21.83
CR1796	152.4	37.8	69.85/76.2	22.23	44.2	52.9	57.2	9.5	444.5	18.59/21.3
D2184	152.4	34.9	76.2	22.23	43.9	51.2	50.8	9.5	355.6	17.7
PB2184	152.4	36	76.2	22.23	45.4	52.8	52	10	396	19.31
SS800	203.2	46.1	88.9	25.4	59.9	69.1	75	12.7	750	30.58
8184	203.2	45.9	88.9	25.4	59.7	65.8	69.9	12.7	742.4	29.2
2284	228.6	36.9	90	25.4	45.4	53	65	10	420	21.88
2284H	228.6	36.9	90	25.4	49.5	57.2	65	12	510	24.7
22840	228.6	46	99	32	62.7	72.7	86	15	884	40.21
XM228.6V2	228.6	36.9	89	25.4	47.9	55.1	65	10	512	22.772
SS1113	102.6	37.5	50.8	17.5	38	45	38.1	6.3	93.1	13.2
SS1125	101.6	32.6	80.8	17.4	38	45	44.5	7.9	152.9	14.3
SS1130	152.4	37.6	63.5	19.05	38.5	45.6	50.8	6.4	137	12.8

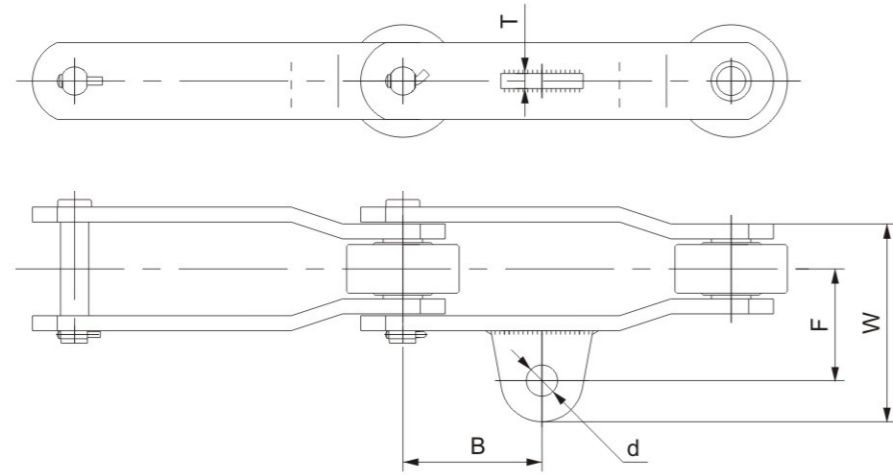
销轴与套筒有碳钢和马氏体不锈钢两种材质  
there are two kinds of materials for pin and bushing, which are carbon steel and martensite stainless steel.

### 弯板型糖机链附件

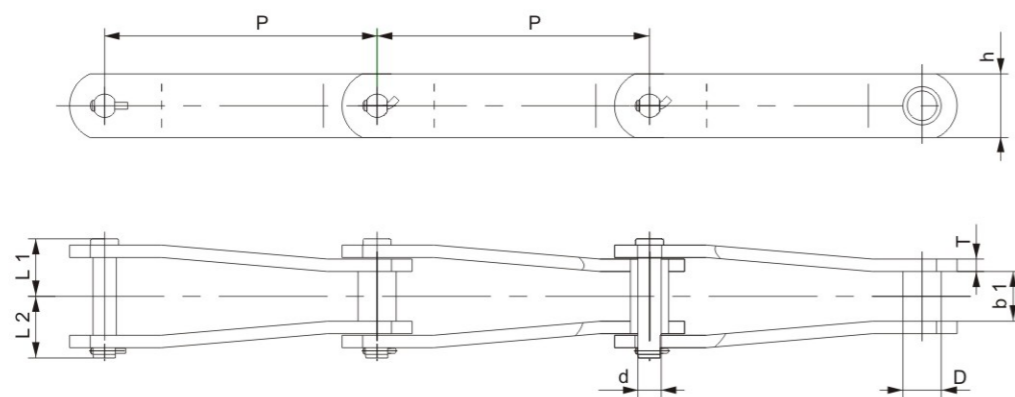


Attach No.	Chain No.	B	F	W	E	d	T
		mm	mm	mm	mm	mm	mm
A42	CR09060	76.2	63.5	83.5	44	20	15.5
	CR1796	76.2	66.9	89.5	45	21	15
	CR09063	76.2	74.6	99.6	50	20.64	15
	D2184	76.2	66.78	92.1/88.7	50.8/44	21	15
	D2184B	76.2	66.7	88.7	44	21	15
	PB2184	76.2	66.7	92.4	55	17	15
	8184	101.5	81.8	107.2	50.8	19.8	15
	SP2184S	76.2	71.7	97.1	50.8	16	15
	SS1130	76.2	67	82.6	44.5	16.7	16
	22840	120	97	122	50	21	15
	SS1113	50.8	60.3	80.3	49.5	16.8	13.5
	SS1124	50.8	50.8	68.3	35	11	10.3
	SS1125	50.8	54	72.3	42	16.7	12.7
	SS800	101.6	81.7	107.1	68	17	15.5

弯板型糖机链附件

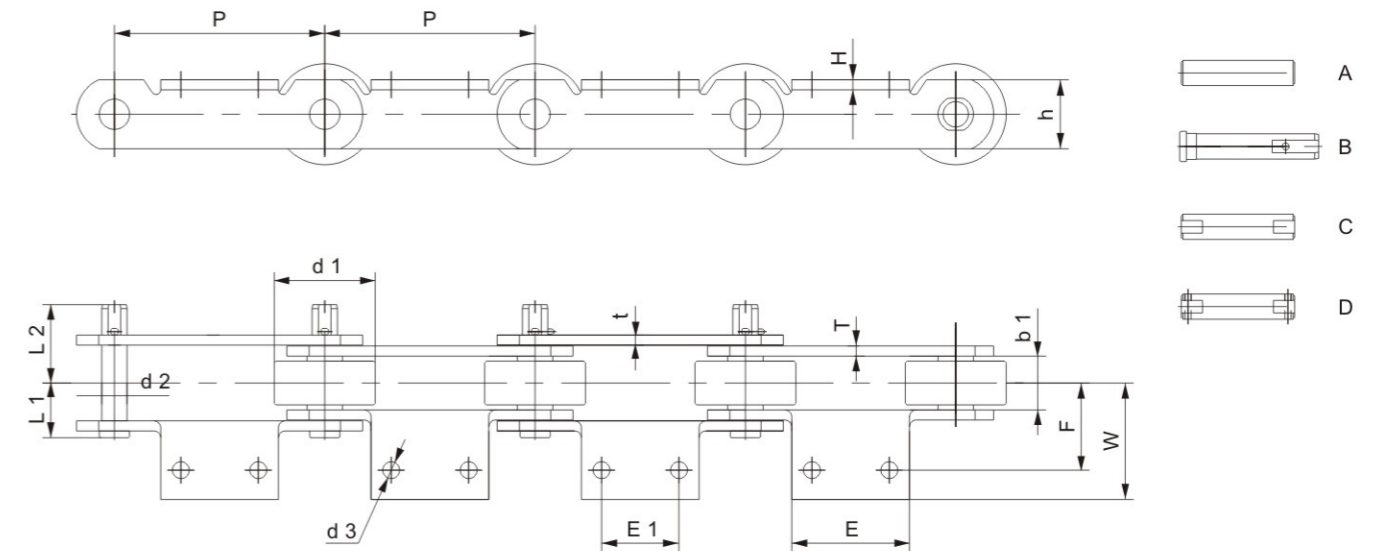


Attach No.	Chain No.	B	F	W	d	T
		mm	mm	mm	mm	mm
AS2	2284	95	80	112	21	16
	2284H	95	80	112	21	16
	P228.6-R90 x 37.1	113.6	80	112	21	19
	P228.6-R98 x 12.7	114.3	97	127	21	16/19
	XM228.6V2	95	80	112	21	20



链号 Chain No.	节距 Pitch	窄端内宽 Inside diameter	套筒外径 Bush diameter	销轴 Pin			链板 Sidebars		最小抗 拉强度 Ultimate tensile strangth	每米 净量 weighi per meter
	P mm	b <sub>1</sub> (min) mm	D (max) mm	d mm	L <sub>1</sub> mm	L <sub>2</sub> mm	h mm	T mm		
SS100D	100	33.27	33.27	17.27	38.4	48.6	44.5	8	200	10.47
B5094	101.6	39.8	36.5	15.77	43.3	46.1	44.45	8	180	11.36
SS4103	77.98	25.4	31.75	19.05	42.4	49.8	38.1	11.2	97.8	13.14
SS0340	101.6	41.3	36.5	15.88	45.1	49.2	44.5	8	142	10.9
SS2103	77.98	35.05	31.75	19.05	37.1	42.4	38.1	6.4	128.7	9.42
SS488	66.27	19.05	22.35	11.18	30.2	47.5	25.4	7.9	48.9	6.04

啤酒生产线-洗瓶机链

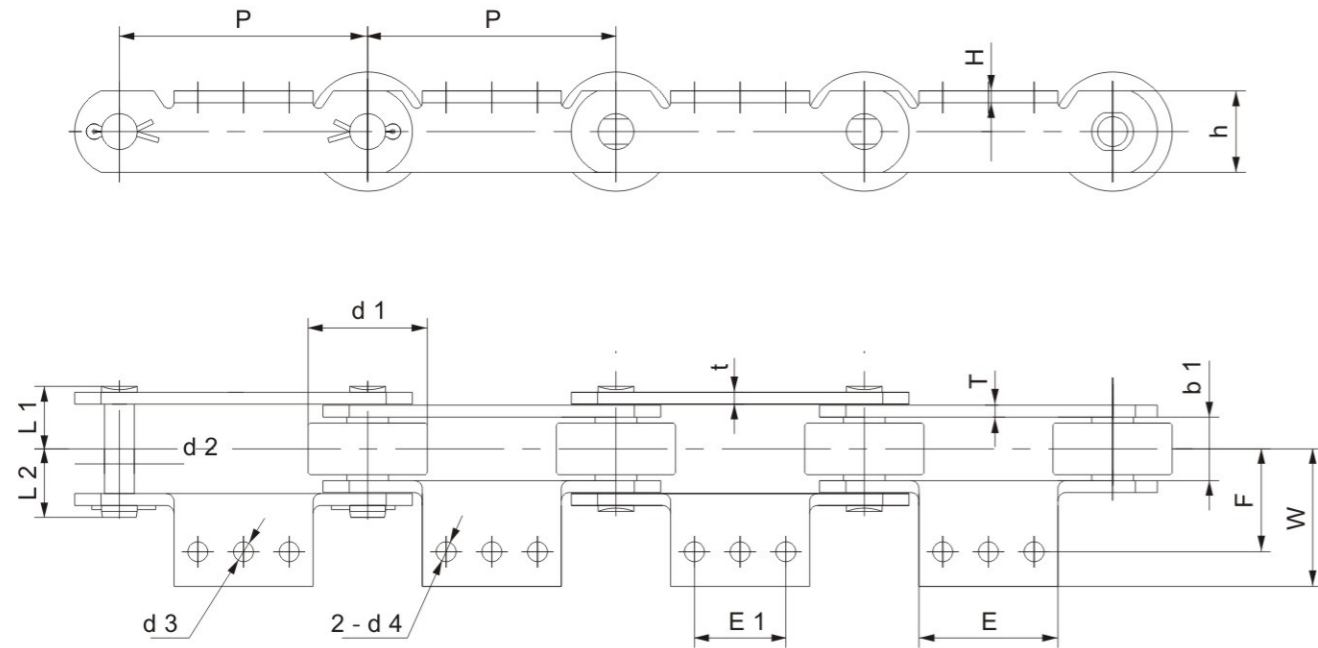


链号 Chain No.	节距 Pitch	滚子外径 Width between inner pistes	内节内宽 Roier diameter	销轴 Pin			链板 Sidebars		最小抗 拉强度 Ultimate tensile strangth	每米 净量 weighi per meter
	P mm	b <sub>1</sub> (min) mm	d <sub>1</sub> (max) mm	d <sub>2</sub> mm	L <sub>1</sub> mm	L <sub>2</sub> mm	h mm	T mm		
CK-150XA	150	78	37	20	39.3	55.3	50	8	210	18.7
CK-155XA	155	97	38	25	42.5	47.5	60	8	346	25.1
CK-160X	160	75	36	18	39	44	45	8	116	16.1
CK-160XA	160	80	33.7	20	38	43	50	8	210	17.4
CK-160XC	160	75	36	18	39	44	45	8	116	16
CK-160XD	160	89	42.8	20	42.15	57.25	60	8	280	22.5
CK-160XE	160	89	42.8	20	42.15	46.15	61	8	280	22.6
CK-169XA	169	90	30	25	41.5	41.5	60	8	224	19.1

链号 Chain No.	F	W	E1	E2	H	d3	型号
	mm	mm	mm	mm	mm	mm	Type
CK-150XA	55	77.2	55	75	25	M12	B
CK-155XA	55	69	65	84	30.5	M12	C
CK-160X	61.5	74.1	70	104	36	13	A
CK-160XA	50	68	60	90	30	M12	C
CK-160XC	58.5	71.2	70	104	35	13	A
CK-160XD	56	70	80	104	30	M10	C
CK-160XE	57.5	70	80	104	30.5	M10	C
CK-169XA	55	72	50	115	30	13	D



啤酒生产线-洗瓶机链

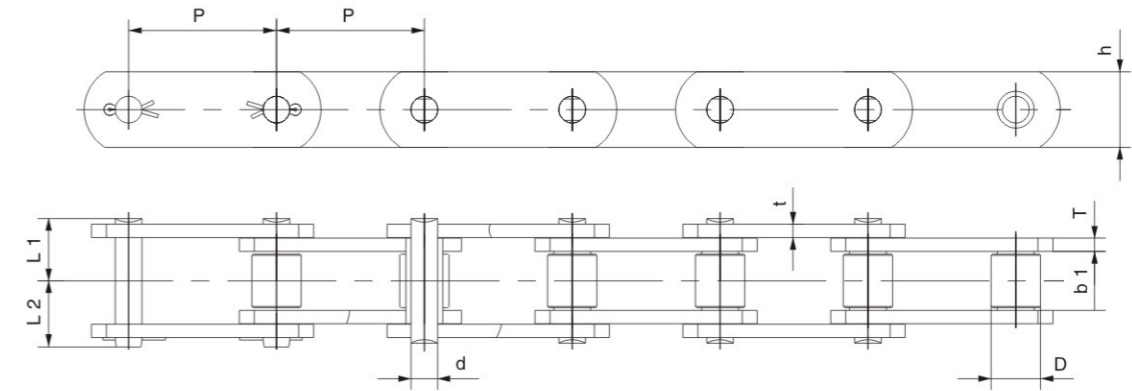


链号 Chain No.	节距 Pitch	滚子外径 Width between inner pistes	内节内宽 Roier diameter	销轴 Pin			链板 Sidebars		最小抗 拉强度 Ultimate tenslie strangth	每米 净量 weighi per meter
	P mm	d <sub>1</sub> (min) mm	b <sub>1</sub> (max) mm	d <sub>2</sub> mm	L <sub>1</sub> mm	L <sub>2</sub> mm	h mm	T mm	Q (min) kN	q kg/m
CK-140X	140	80	40	20	41	45	50	8	210	20.2
CK-155X	155	97	38	20	39.6	44.8	50	8	196	22.8
CK-155XD	155	80	34	20	37.3	42.5	50	8	196	18.7
CK-155XE	155	97	38	25	42.5	47.5	60	8	346	24.8
CK-165XA	165	80	39.8	20	41	46	50	8	190	17.6
CK-165XB	165	80	39.8	20	41	46	50	8	190	17.7
CK-165XE	165	80	39.8	20	41	46	50	8	190	17.7

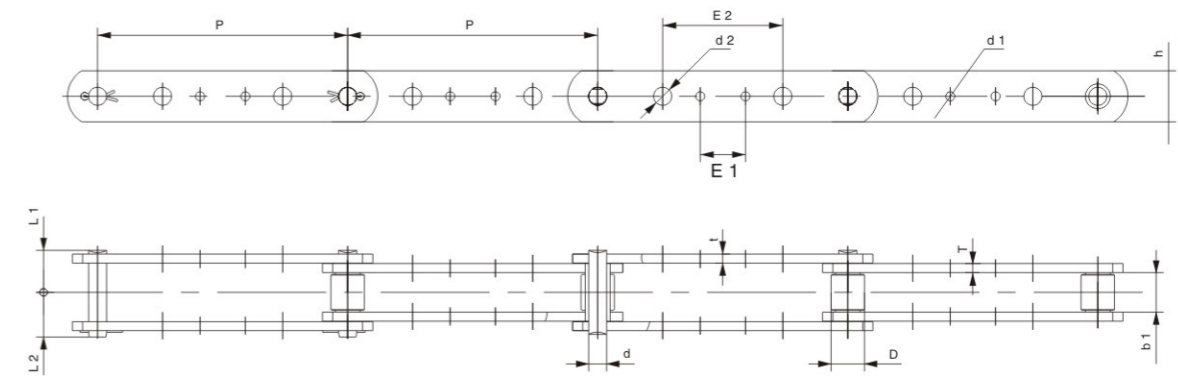
链号 Chain No.	F mm	W mm	E1 mm	E2 mm	H mm	d3 mm	d4 mm
CK-140X	69	83	50	76	25	M16	11.1
CK-155X	55	70	65	99	30	M12	M12
CK-155XD	55	70	65	99	30	M12	M12
CK-155XE	55	69	65	84	30.5	M12	M12
CK-165XA	69	83	50	75	25	12	M12
CK-165XB	69	83	50	75	25	M16	12
CK-165XE	69	83	50	75	25	M16	10.6



木材输送链



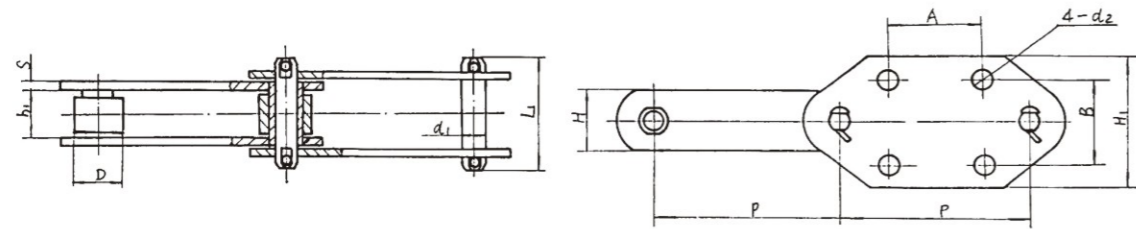
链号 Chain No.	节距 Pitch	内节内宽 Width between inner pistes	滚子外径 Roier diameter	销轴 Pin			链板 Sidebars		最小抗 拉强度 Ultimate tenslie strangth	每米 净量 weighi per meter
	P mm	b <sub>1</sub> (min) mm	D (max) mm	d mm	L <sub>1</sub> mm	L <sub>2</sub> mm	h mm	T mm	Q (min) kN	q kg/m
81X	66.27	26.97	23	11.1	24.5	29.5	28.5	4/4	106.7	3.78
81XH	66.27	27.8	23	11.1	30.6	35.2	31.4	5.6/7.95	152	5.9
81XHH	66.27	27.8	23	11.1	32.95	37.55	31.4	7.95/7.95	191.5	6.75



链号 Chain No.	节距 Pitch	内节内宽 Width between inner pistes	滚子外径 Roier diameter	销轴 Pin			链板 Sidebars						最小抗 拉强度 Ultimate tenslie strangth	每米 净量 weighi per meter
	P mm	b <sub>1</sub> (min) mm	D (max) mm	d mm	L <sub>1</sub> mm	L <sub>2</sub> mm	h mm	t/T mm	d1 mm	d2 mm	E1 mm	E2 mm	Q (min) kN	q kg/m
3939	203.2	26.99	23.02	11.1	24.5	27.8	28.6	4	6.35	/	38.1	/	122.25	2.41
D3939-B21	203.2	26.99	23.02	11.1	24.5	27.8	28.6	4	7.14	/	38.1	/	122.25	2.41
D3939-B4	203.2	26.99	23.02	11.1	24.5	27.8	28.6	4	7.14	7.14	38.1	101.6	122.25	2.38
D3939-B43	203.2	26.99	23.02	11.1	24.5	27.8	28.6	4	7.14	10.3	38.1	92.1	122.25	2.35
D3939S-B4	203.2	26.99	23.02	11.1	29.3	32.6	28.6	6.4	7.14	7.14	38.1	101.6	152	3.53
S3939H-B4	203.2	26.99	23.02	11.1	29.6	32.7	28.6	5.6/7.5	7.14	7.144	38.1	101.6	152	3.61
S3939-B43	203.2	26.99	23.02	11.1	29.6	32.7	28.6	5.6/7.5	7.14	10.3	38.1	92.1	152	3.57
81X8P-ELA	203.2	26.99	23.02	11.1	24.5	27.8	28.6	4	/	10.3	/	101.6	122.25	2.4

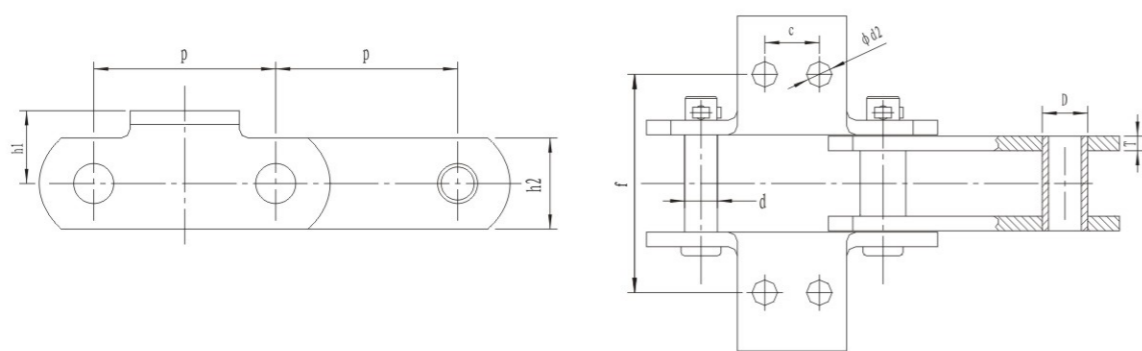


## NE提升机链



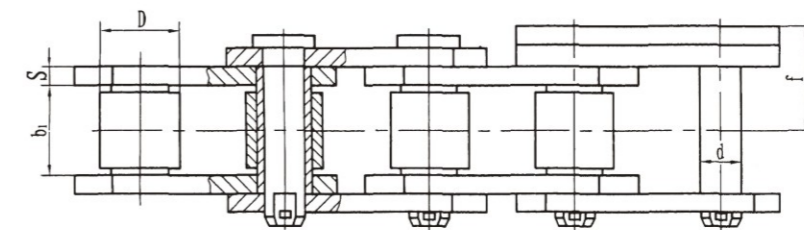
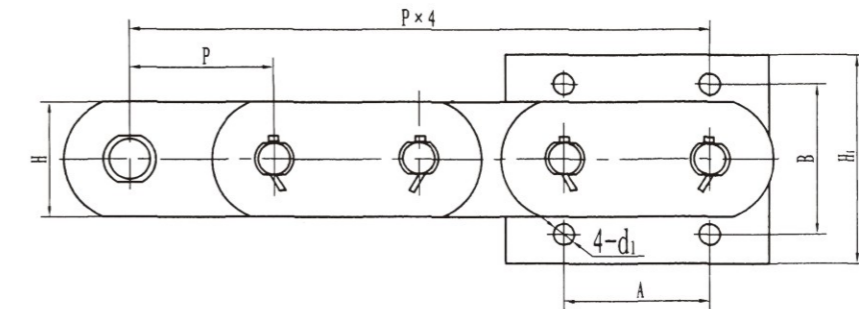
链号 Chain No.	节距 Pitch P (mm)	内节内宽 Inner width of inner link b1 (mm)	滚子直径 Diameter of roller D (mm)	销轴直径 Diameter of pin d1 (mm)	销轴长度 Length of pin L (mm)	链板宽度 Width of sidebar H (mm)	链板厚度 Thickness of sidebar S (mm)	宽链板 Width sidebar H1 (mm)	螺孔直径 Screw dia. d2 (mm)	链斗安装尺寸 A×B (mm)	重量 Weight Q (kg/m)
NE15	101.6	27	26.5	11.5	70	35	6	H=29 B=70	12	40×90	7.22
NE30	152.4	36.5	36	15.5	90	50	8	H=38 B=90	14	60×120	12.47
NE50	152.4	36.5	36	15.5	90	50	8	110	14	75×70	11.9
NE100	200	51.8	44.5	19.1	120	60	10	125	18	100×80	16.8
NE150	200	57.6	48.5	22.2	126	75	10	125	18	100×80	20.8
NE200	250	67.4	63.5	31.75	146	90	12	150	18	140×100	31
NE300	250	75	70	35	170	100	16	150	18	140×100	46.4
NE400	300	75	70	35	170	100	16	180	22	170×125	44.4
NE400A	300	55	60	30		82	16	170	17	160×120	35.73
NE500	300	82.5	75	38.5	180	110	16	200	22	170×120	
NE600	350	85	83	42	190	120	16	210	22	200×170	
TBS250	250	71.4	85	35	160	100	16	160	18	125×110	55.44
TBS200	200	58	70	28	136	85	14	140	16	100×100	34

## SDB链斗输送机链条



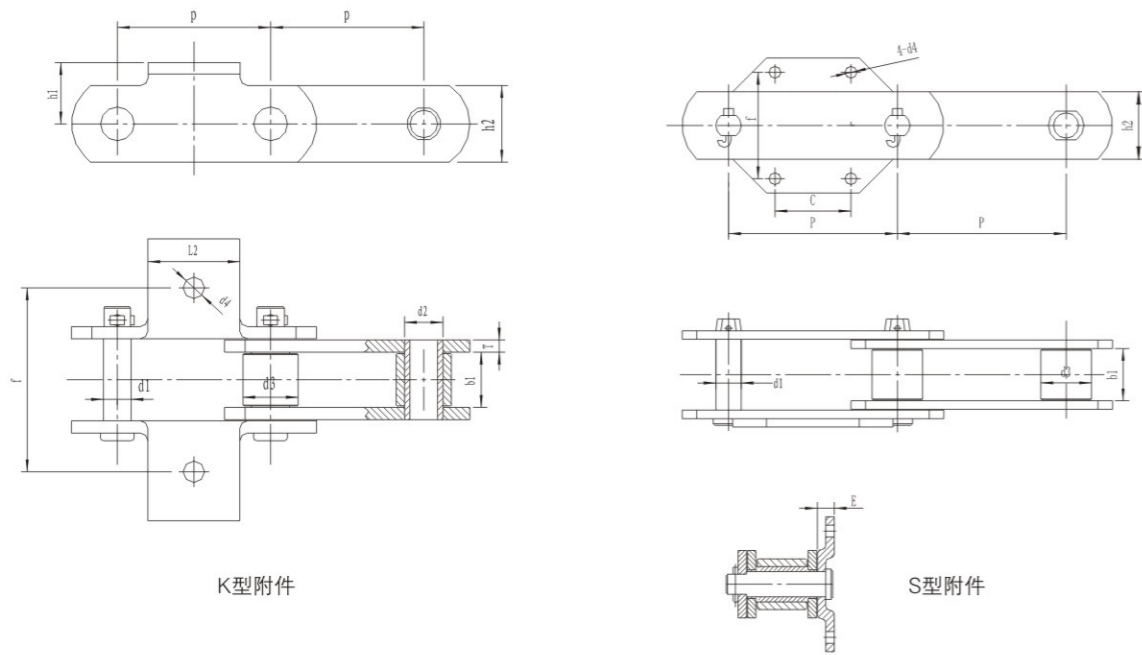
链号 Chain No.	节距 Pitch P (mm)	内节内宽 Inner width of inner link b1 (mm)	套筒直径 D (mm)	销轴直径 Diameter of pin d (mm)	链板厚度 Thickness of sidebar s (mm)	链板高度 Height of sidebar h2 (mm)	附耳中心高 h1 (mm)	附耳孔中心距 f (mm)	附耳孔间距 c (mm)	附耳孔直径 d2 (mm)	重量 Weight q (kg/m)
SDB400	250	40	36	20	8	60	55	130	85	14	15.4
SDB400S	200	50	F120/90	20	6	55	24	120	100	14	22.4
SDB500	160	42	36	20	8	60	55	140	50	14	12.5
	250	44	36	21	8	60	55	140	85	18.5	15.4
SDB630	250	62	45	30	10	80	75	162	85	18.5	25.7
SDB600	250	64	50	36	10	90	90	170	250	17	29
SDB800	250	64	50	36	12	90	90	170	250	17	33

## NSE链斗输送机链条



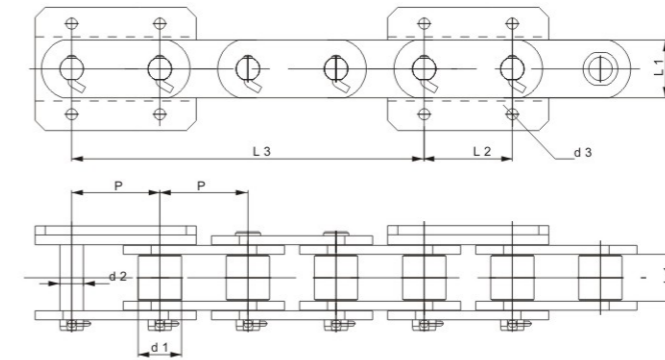
型号 TYPE	节距 (P)	滚子外径 (Φ)	内节内宽 (b1)	销轴直径 (D)	销轴长度 (L)	链板厚 (T)	链板宽 (H)	链板高 (h1)	螺孔直径 (D2)	链斗安装 尺寸 (A×B)	载荷 (T)
NSE100	100	44.5	51.8	19.1	120	10	60	150	18	105×100	38
NSE200	100	44.5	51.8	19.1	120	10	60	150	18	105×100	38
NSE300	100	48.5	57.8	22.2	126	10	75	150	18	105×100	55
NSE400	125	63.5	67.4	31.75	146	12	90	180	18	130×125	75
NSE500	125	63.5	67.4	31.75	146	12	90	180	18	130×125	75
NSE600	125	70	75	35	170	16	100	180	18	130×125	100
NSE800	150	75	82.5	38.5	177	16	115	205	22	160×150	120
NSE900	150	75	85.2	38.5	177	16	115	205	22	160×150	120
NSE1000	150	82	88.6	41.7	184	16	125	205	22	160×150	150
M150A	150	35	37	18	86	8	50	125		75×80	
M125A	150	60	68	36	140	12	90	180		125×140	
M100A	100	50	57	30	120	10	75	165		100×115	
M224-75	75	36	42	18	94	8	50	110		75×80	
M315-75	75	42	48	21	100	8	56	145		75×100	
M224-200	200	36	42	18	94	8	50	136		100×100	

### M系列斗提链



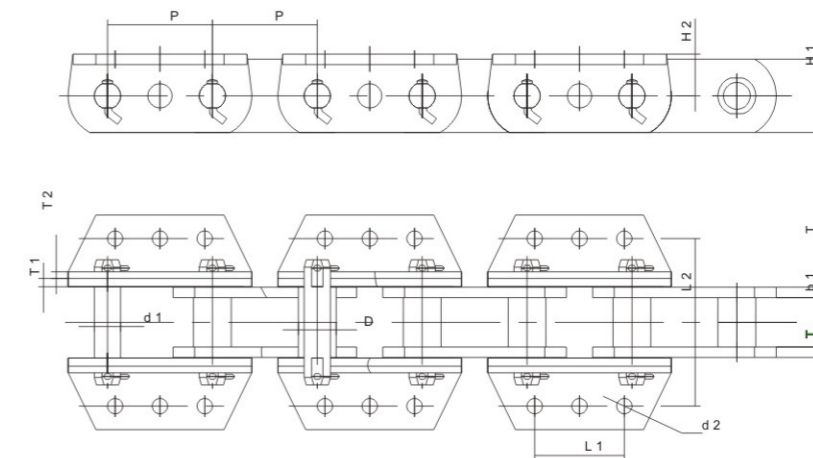
链号 Chain No.	节距 Pitch	内节内宽 Inner width of inner link	销轴直径 Diameter of pin	套筒直径	滚子直径 Diameter of roller	附件孔径	附件孔距	附件宽度	附件孔距	附件高度	链板厚度 Thickness of sidebar	抗拉强度 Tensile strength (KN)
	P (mm)	b1 (mm)	d1 (mm)	d2 (mm)	d3 (mm)	d4 (mm)	f (mm)	L2 (mm)	C (mm)	E (mm)		
M112K	100	31	15	21	30	14	110	60			6	112
M160K	100	36	18	25	36	14	120	60			7	160
M160S	100	36	18	25	36	9	70		42	22	7	160
M224S	125	44	21	30	42	12	84		50	22	8	224
M315S	160	47	25	36	50	14	92		80	26	10	315
M450S	200	62	30	42	60	14	126		90	20	10	450

### NBH斗提机链条



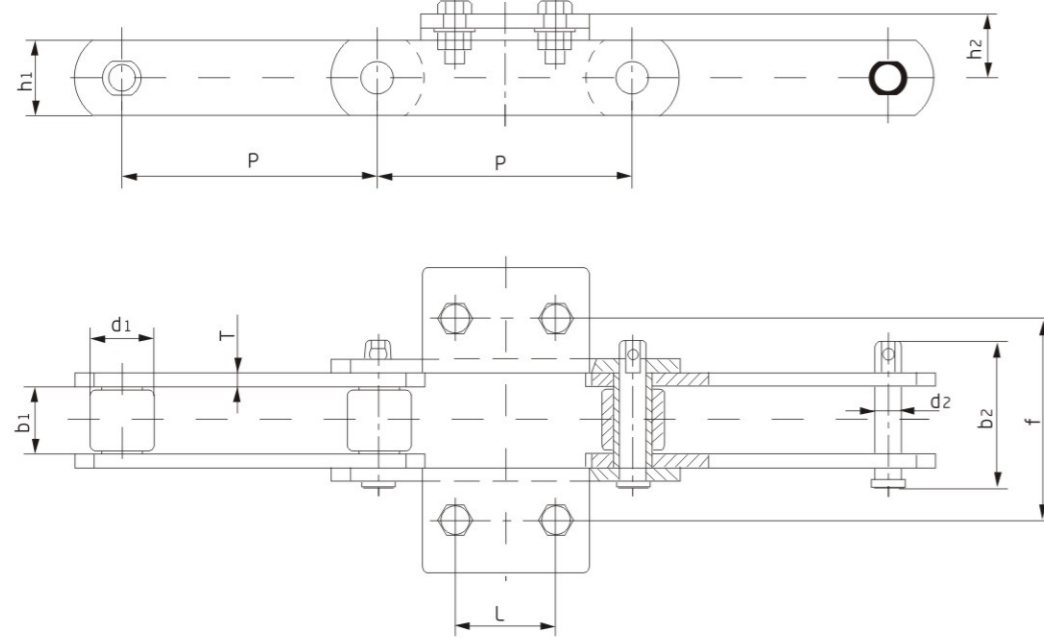
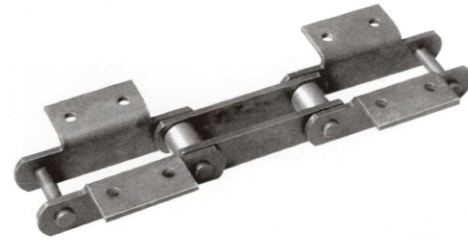
链号 Chain No.	节距 Pitch	滚子直径 Roller diameter	内节内宽 Width between inner pistes	销轴直径 Pin	料斗安装尺寸				抗拉载荷 Sidebars
	P mm	d1 mm	b1 mm	d2 mm	L1 mm	L2 mm	L3 mm	d3 mm	Q kN
NBH300	75	34.9	37.1	15.88	80	75	300	14	236
	76.2	35	37	18	80	75	304.8	14	300
	150	35	37	18	80	75	300	14	300
NBH450	100	50	54	26	115	100	400	18	600
	100	50	57	30	115	100	400	18	720
NBH600	125	57.2	66.7	28	110	125	500	18	650
	125	60	68	36	140	125	500	18	980
NBH800	150	80	93	42	190	190	600	22	1500

### ZYB中央链板式链条



型号 TYPE	节距 (P)	滚子外径 (D)	内节内宽 (b1)	销轴直径 (d1)	内片厚度 (T)	外链板厚 (T1)	弯板厚 (T2)	链板宽 (h1)	高度 (H2)	螺孔直径 (d2)	链斗安装尺寸 (L1×L2)	载荷 (T)
ZYB600	175	71	100	44.5	20	16	10	120	73	18	160×315	1800
ZYB800	175	81	120	53.5	25	18	12	140	73	18	160×330	2300

## 弯附板式提升机链(水泥链)

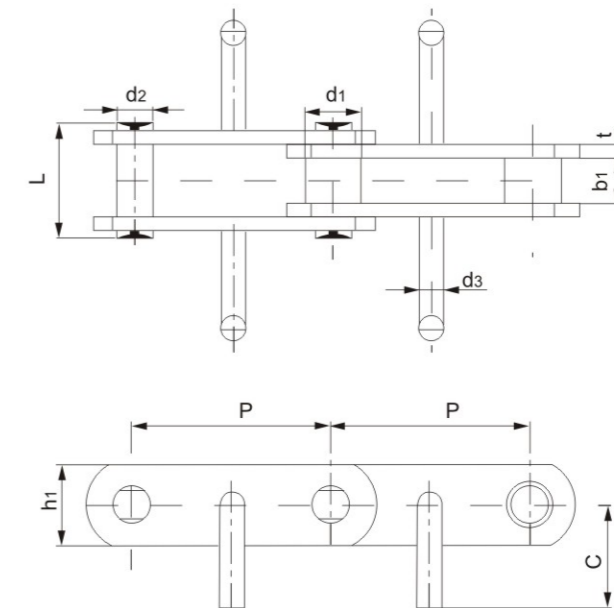
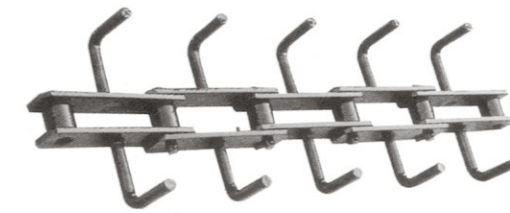


斗式提升机链适用于粉末状、颗粒状及小块状的水泥、粉尘、谷物、砂石和煤炭等散状物料的运输设备。

The bucket lifter chain is suitable for conveyor device used in bulk materials such as cement, powder, grain powder, sand and coal in powder, pellet or small lump styles.

链号 Chain No.	节距 Pitch P (mm)	内节内宽 Inner width of inner link b1(min) (mm)	滚子直径 Diameter of roller d1(max) (mm)	链板高度 Height of sidebar h1 (mm)	链板厚度 Thickness of sidebar T (mm)	销轴长度 Length of pin b2 (mm)	销轴直径 Diameter of pin d2 (mm)	附件尺寸 Dimensions of attachment			抗拉强度 Tensile strength Q (KN)
								L (mm)	f (mm)	h2 (mm)	
DT-10	100.0	20.5	44	26	4	42	9.54	40	69	25	82.0
DT-15A	101.6	15.7	38.1	26	4	37.1	9.54	40	63.5	22.3	82.0
DT-15B	101.6	31	44.45	38	7.9	75.5	15.88	40	110	35	140.0
DT-50	160.0	33.7	38.0	50	8	82.5	15.88	60	130	50	240.0
DT-35	160.0	36	37.5	40	6	73.0	15.88	60	130	35	180.0
DT-30D	152.4	37	38.1	45	8	86.6	16.0	60	120	37.5	224.0
DT-30A	152.4	40	38.1	45	8	89.6	16.0	60	120	37.5	224.0
DT-150	200.0	57.6	48.5	75	10	126	22.2	80	160	40	400.0
DT-200	250.0	67.4	63.5	90	12	146	31.25	120	200	75	580.0

## 粉粒链运机链

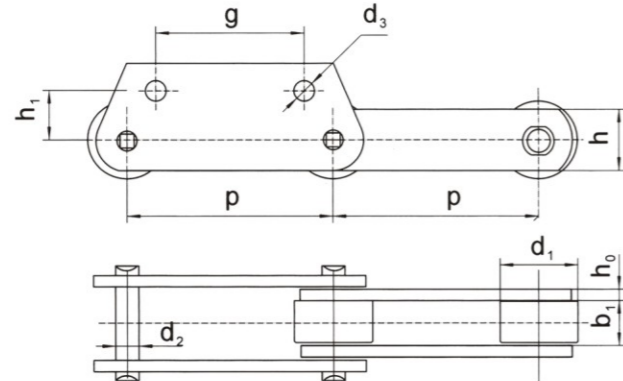


FU链运机链主要用于矿山、冶金、水泥、筑路行业的粉末输送设备。

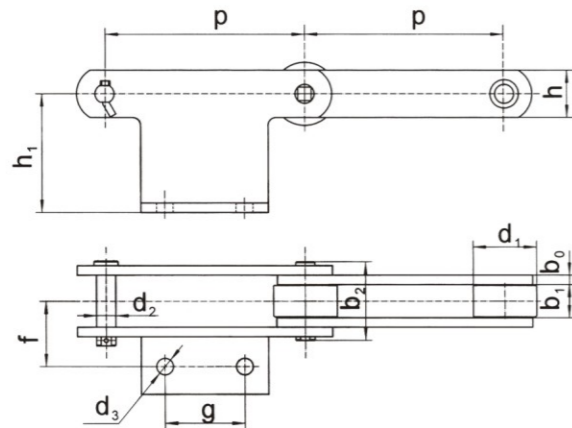
FU style chain is mainly used in Powder conveyor in mine, metallurgy, cement and road making industries.

链号 Chain No.	节距 Pitch P (mm)	滚子直径 Diameter of roller d1(max) (mm)	销轴直径 Diameter of pin d2 (mm)	销轴长度 Length of pin L (mm)	内节内宽 Inner width of inner link b1(min) (mm)	链板厚度 Thickness of sidebar t (mm)	链板高度 Height of sidebar h1 (mm)	附件高度 Height of attachment C (mm)	附件直径 Diameter of attachment d3 (mm)	抗拉强度 Tensile strength Q(min) (KN)
FU机型提升链 Lifting Chain for FU Model Machine										
FU150-101.6	101.6	26.5	11.50	70	27.0	6	35	42.5	12	126.0
FU200-152.4	152.4	35.0	15.50	90	36.5	8	50	65.0	16	244.0
FU270-152.4	152.4	36	15.50	90	36.5	8	50	85.0	16	244.0
FU350-200	200.0	44.5	19.10	120	51.8	10	60	129.0	20	292.8
FU410-200	200.0	44.5	19.10	120	51.8	10	60	148.0	20	292.8
FU500-300	300.0	63.5	31.75	141	67.4	12	90	180.0	28	410.0
FU600-300双	300.0	48.5	22.20	126	57.4	10	75	215.0	25	310.0

堆取料机用链

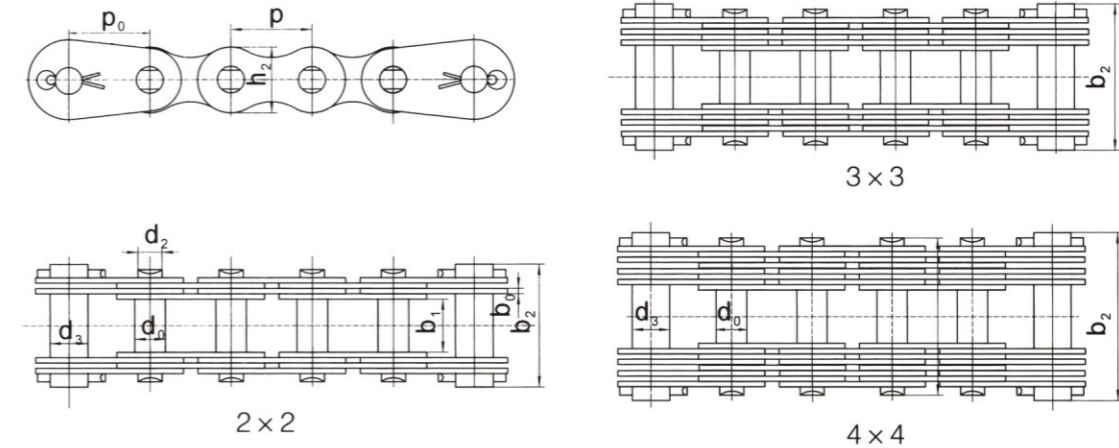


链号 Chain No.	节距 Pitch	内节内宽 Inner width of inner link	滚子直径 Diameter of roller	销轴直径 Diameter of pin	链板高度 Height of sidebar	链板厚度 Thickness of sidebar	各部位参数 Various part dimension			极限拉伸载荷 Ultimate tensile strength (KN)	每米重量 Weight per meter (kg/m)	备注
	P (mm)	b1 (mm)	d1 (mm)	d2 (mm)	h (mm)	b0 (mm)	h1 (mm)	g (mm)	d3 (mm)			
1	400	65	120	34	100	14	110	300	25	1098	46	D191-6-1-1P
2	250	55.2	95	28	75	14	110	180	25	735	39	D214-3-1-1P
3	315	55.2	120	28	85	14	110	200	25	883	44	D277-4-1-3P
4	250	55.2	70	24	60	10	120	180	25	490	24.1	D363-3-1-1P
5	250	55.2	95	28	75	14	120	180	25	490	39	D382-3-1-1P
6	315	65	120	34	100	14	110	200	25	1471	52	D380-7-1-1P
7	250	58	80	25.7	60	10	115	180	21	343	29	YKD250
8	250	65	130	36	105	16	127	80	26	618	90	CJ102.15.03.01



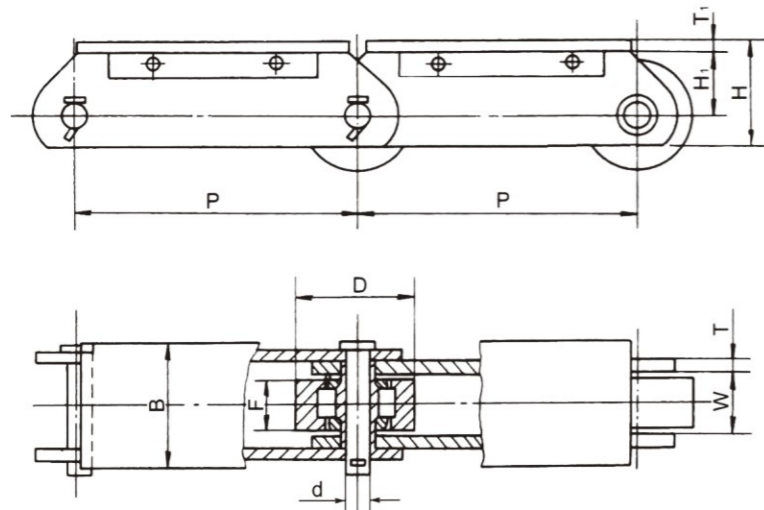
链号 Chain No.	节距 Pitch	内节内宽 Inner width of inner link	滚子直径 Diameter of roller	销轴直径 Diameter of pin	链板高度 Height of sidebar	链板厚度 Thickness of sidebar	横向距离 Transverse distance	附件孔距 Hole distance of accessories	附件孔径 Bore diameter of accessories	平台高度 Height of platform	极限拉伸载荷 Ultimate tensile strength (KN)	每米重量 Weight per meter (kg/m)	备注
	P (mm)	b1 (mm)	d1 (mm)	d2 (mm)	h (mm)	h0 (mm)	f (mm)	g (mm)	d3 (mm)	h1 (mm)			
1	250	55.2	95	28	75	14	110	100	25	125	735	39	D207-3-2-2P
2	250	42	80	24	60	12	83	100	21	150	539	33	D249-3-4P
3	250	55.2	95	28	75	14	93	100	25	160	735	41	D278-3-1-1P
4	250	55.2	95	28	75	14	93	100	25	150	735	40	D289-2-1-1P
5	250	60	80	26	80	10	85	80	14	70	560	32	
6	400	65	120	40	100	16	125	140	26	150	1400	54	D152-8-2P

板式销合链

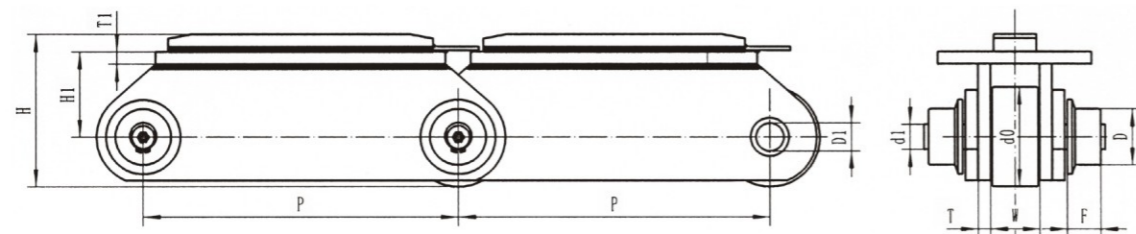


链号 Chain No.	组合形式 Lacing	节距 Pitch		销轴直径 Diameter of pin d2 (mm)	各部位参数 Various part dimension					销轴长度 Pin length b2 (mm)	极限拉伸载荷 Ultimate tensile strength (KN)	每米重量 Weight per meter (kg/m)
		P (mm)	P0 (mm)		d0 (mm)	d3 (mm)	h2 (mm)	b0 (mm)	b1 (mm)			
B159	2x2	110	-	42	48	-	82	16	62	219	1600	76.52
B127	2x2	180	-	60	70	-	120	16	66	232	2200	110
B156	2x2	200	-	65	75	-	140	20	90	286	3900	157.1
B142	2x2	200	-	70	80	-	140	20	90	285	3300	159.5
B138	2x2	200	-	45	52	-	90	15	60	230	1700	73
B136	2x2	250	-	75	84	-	150	22	100	312	4000	184
B148	3x3	110	-	40	47	-	75	10	60	220	1600	73.75
B121	3x3	110	-	44	50	-	90	8	90	236	1250	82
B131	3x3	170	-	60	70	-	130	16	135	403	4000	135
B157	3x3	80	-	28	32	-	52	5	50	162	650	31.77
B141	4x4	90	110	35	40	-	70	6	70	204	800	58.6
B124	4x4	140	165	55	70	-	110	10	120	340	2500	147
B128	4x4	240	-	70	85	-	160	10	100	306	6700	182
B101	4x4	30	40	9	11	14	20	3	20	45	40	2.25
B102	2x2	35	45	11	13	15	24	3	22	56	63	4.6
B103	2x2	40	50	12	14	18	28	3	25	59	80	5.6
B104	2x2	45	55	15	17	21	37	3	30	68	100	7
B105	3x3	50	60	18	22	26	38	3	36	94	160	11.5
B106	3x3	60	70	22	26	34	46	4	45	120	250	20.5
B107	4x4	70	85	28	32	40	52	4.5	50	150	375	29
B108	4x4	80	95	32	36	45	60	5	60	170	500	38

## 重载平板链



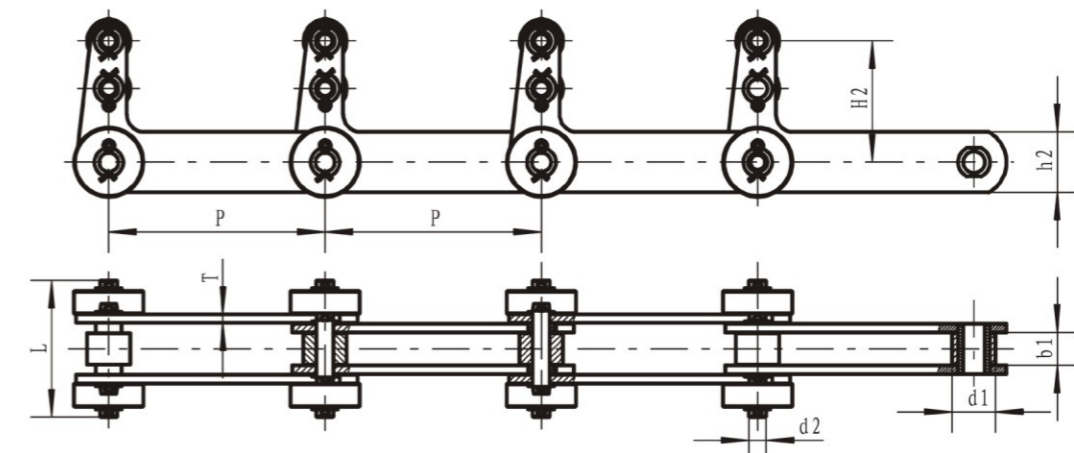
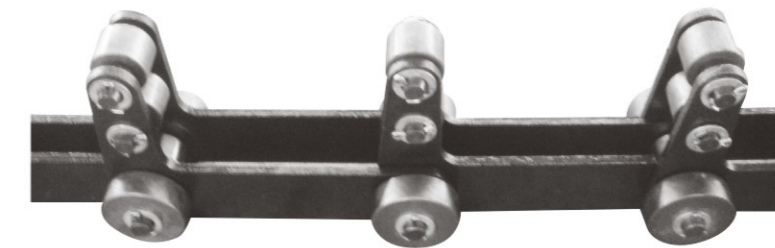
A型 (A Type)



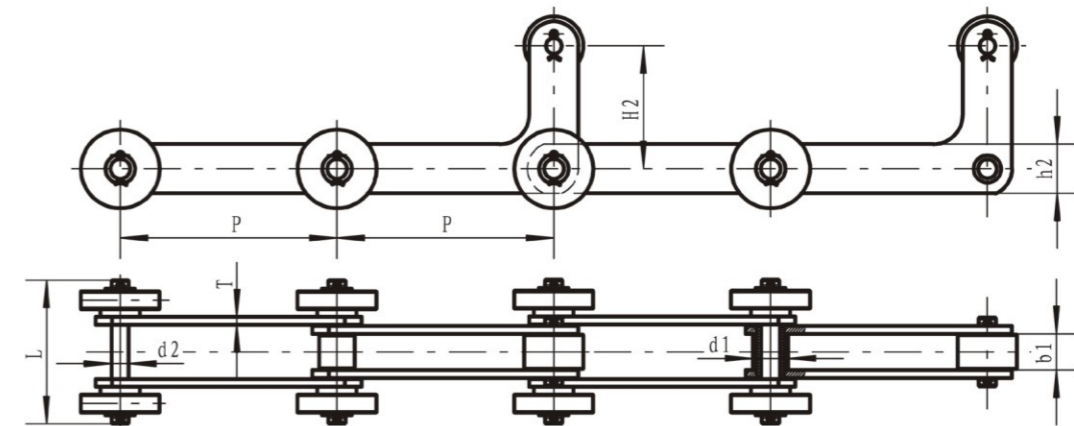
B型 (B Type)

链号 Chain No.	节距 Pitch		链板高度 Height of sidebar	链板厚度 Thickness of sidebar	平板厚度 Thickness of flat plate	A型 A type					B型 B type					极限拉伸载荷 Ultimate tensile strength (KN)		
	P (mm)	H (mm)	H1 (mm)	T (mm)	T1 (mm)	W (mm)	B (mm)	d (mm)	D (mm)	F (mm)	W (mm)	B (mm)	d0 (mm)	d1 (mm)	D (mm)		F (mm)	D1 (mm)
P150	150	90	50	6	8	40	90	12.7	70	35	32	140	42	20	65	22	21	175
P200	200	95	55	8	9	45	100	15.8	80	40	34	150	50	20	65	25	25	200
P250	250	104	64.5	9.5	9	51.4	110	19.1	95	44	36	160	55	25	70	25	30	250
P500	500	200	165	20	20						80	250	160	40	90	55	45	850

## 钢管运输链

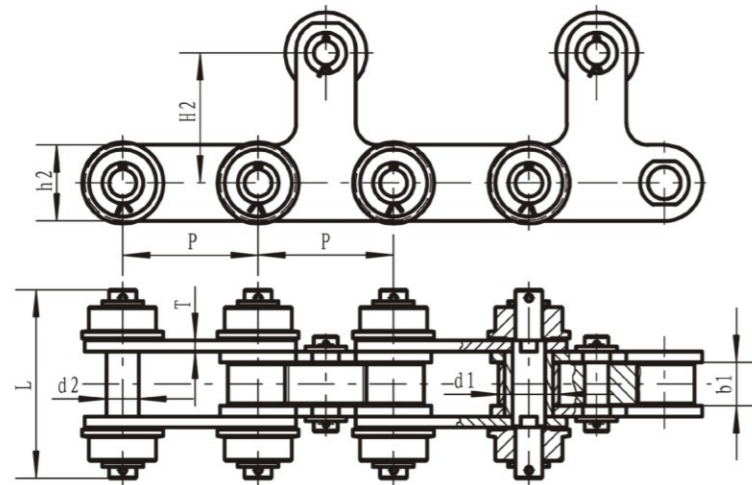


节距 Pitch P (mm)	内节内宽 Inner width of inner link b1 (mm)	滚子直径 Diameter of roller d1 (mm)	销轴直径 Diameter of pin d2 (mm)	销轴长度 Length of pin L (mm)	链板高度 Height of sidebar h2 (mm)	链板厚度 Thickness of sidebar T (mm)	顶置轮高度 Height of top chain H2 (mm)	抗拉强度 Tensile strength Q (KN)
250	38	50	25	160	70	10	140	320

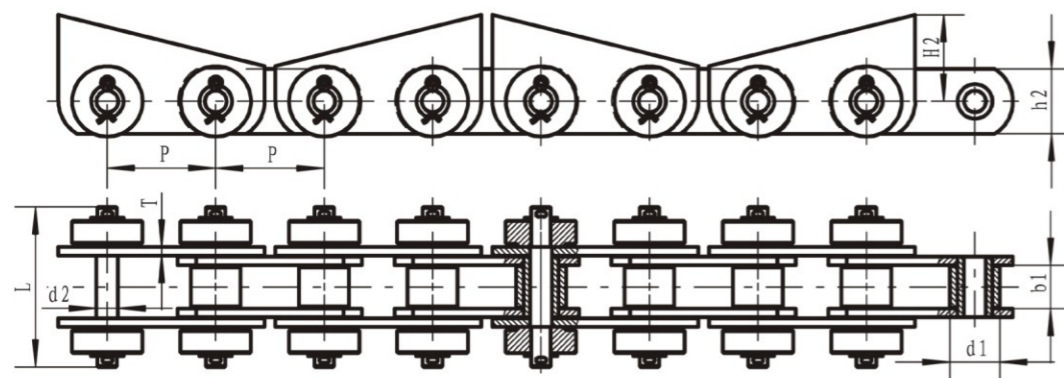


节距 Pitch P (mm)	内节内宽 Inner width of inner link b1 (mm)	滚子直径 Diameter of roller d1 (mm)	销轴直径 Diameter of pin d2 (mm)	销轴长度 Length of pin L (mm)	链板高度 Height of sidebar h2 (mm)	链板厚度 Thickness of sidebar T (mm)	顶置轮高度 Height of top chain H2 (mm)	抗拉强度 Tensile strength Q (KN)
220	37	36	19.05	146	50	8	125	200

## 钢管运输链

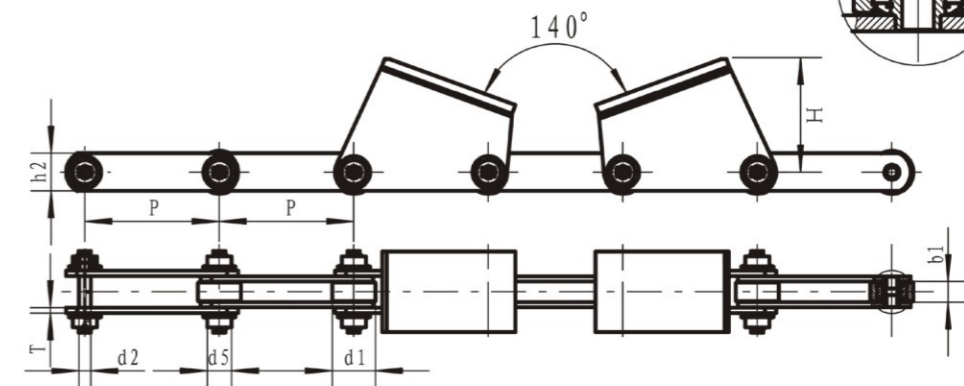
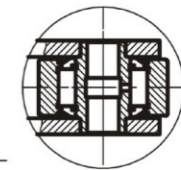
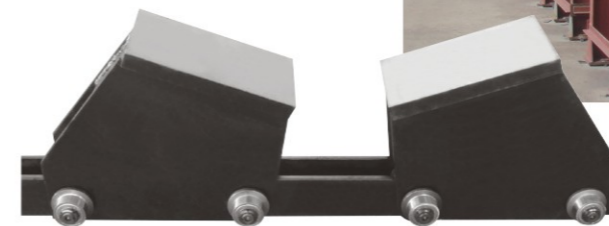


节距 Pitch P (mm)	内节内宽 Inner width of inner link b1 (mm)	滚子直径 Diameter of roller d1 (mm)	销轴直径 Diameter of pin d2 (mm)	销轴长度 Length of pin L (mm)	链板高度 Height of sidebar h2 (mm)	链板厚度 Thickness of sidebar T (mm)	顶板高度 Height of top sidebar H2 (mm)	抗拉强度 Tensile strength Q (KN)
125	40	56	30	176	70	10	120	315



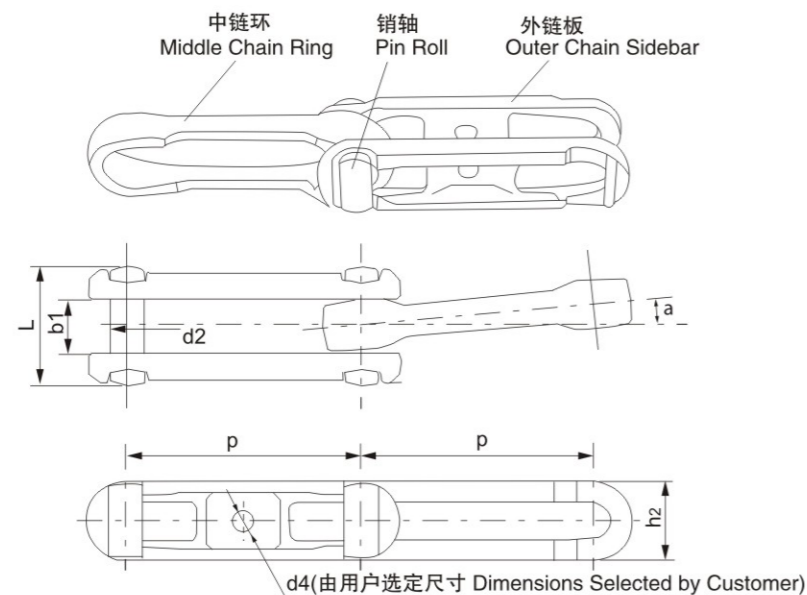
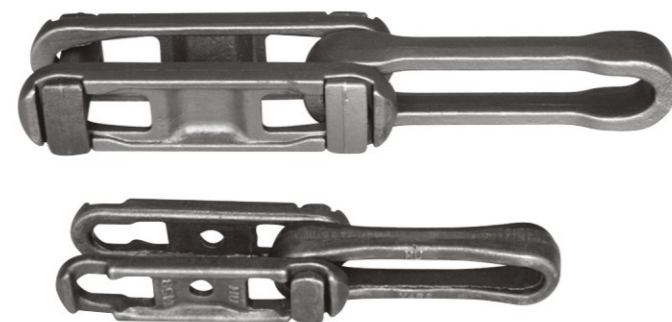
节距 Pitch P (mm)	内节内宽 Inner width of inner link b1 (mm)	滚子直径 Diameter of roller d1 (mm)	销轴直径 Diameter of pin d2 (mm)	销轴长度 Length of pin L (mm)	链板高度 Height of sidebar h2 (mm)	链板厚度 Thickness of sidebar T (mm)	顶置轮高度 Height of top chain H2 (mm)	抗拉强度 Tensile strength Q (KN)
100	40	46	20	148	60	8	80	175

## 钢卷输送链



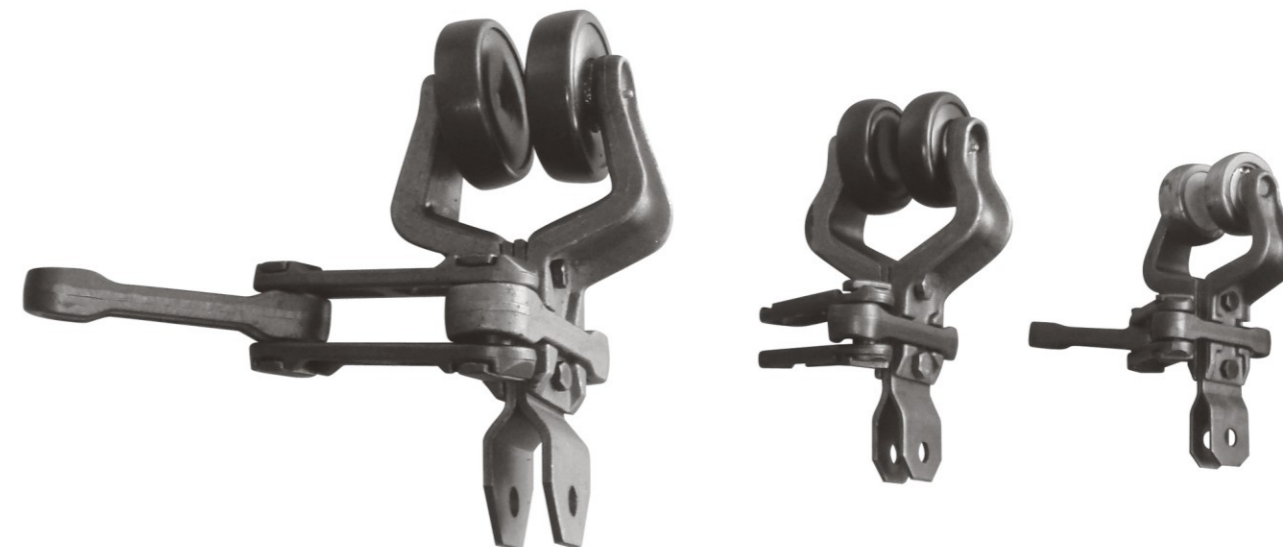
链号 Chain No.	节距 Pitch P (mm)	内节内宽 Inner width of inner link b1 (mm)	滚子直径 Diameter of roller d1 (mm)	销轴直径 Diameter of pin d2 (mm)	链板高度 Height of sidebar h2 (mm)	链板厚度 Thickness of sidebar T (mm)	外侧滚直径 Diameter of outer roller d5 (mm)	鞍座高度 H (mm)	抗拉强度 Tensile strength Q(min) (KN)
P250-A	250	80	100	53.5	150	25	160	862.5	1500
P250-B	250	80	100	53.5	150	25	160	312.5	1500
P250-C	250	80	100	53.5	150	25	160	862.5	1500
P500-A	500	76	160	44	140	20	90	721.9	1300
P500-B	500	80	160	44	140	20	90	514	1300
P500-C	500	80	160	44	140	20	90	420	1300

## 模锻可拆链



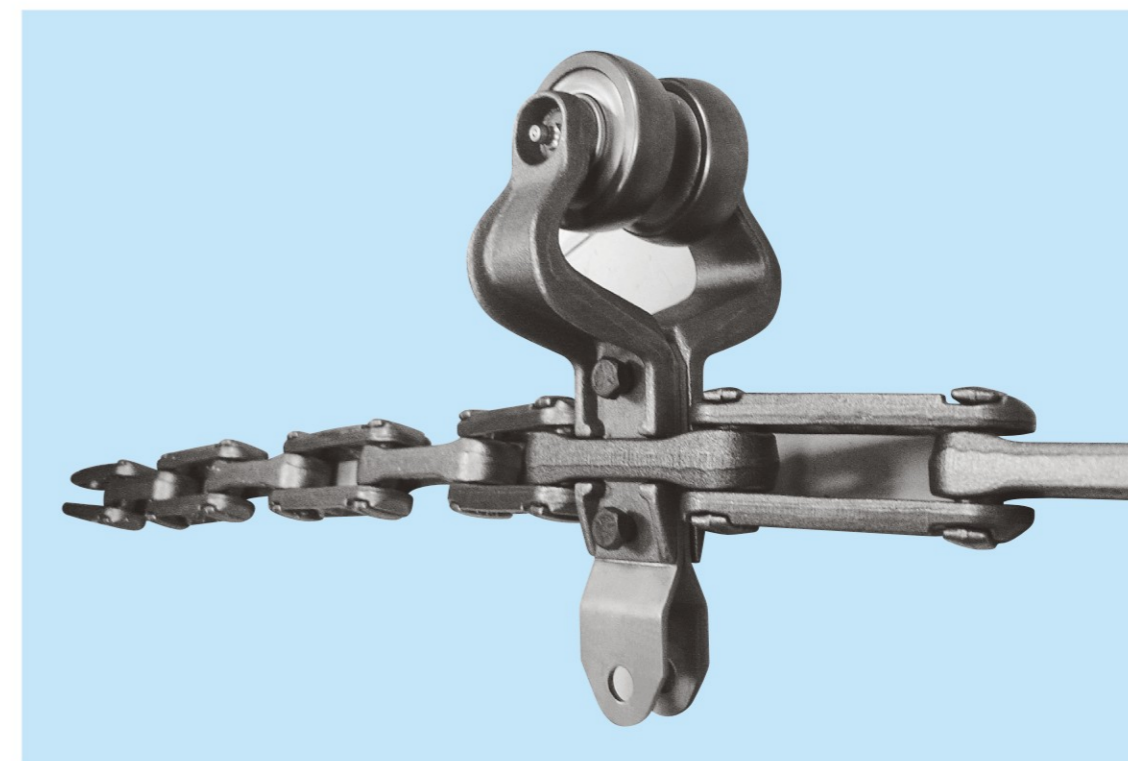
	链号 Chain No.	参考节距 Eeferenced pitch P (mm)	销轴直径 Diameter of pin d2 (mm)	销轴长度 Length of pin L (mm)	标准测量长度 Standard measurement length (min/max) (mm)	标准测量长度的节 距数 Number of pitch of standard measurement length	侧向转角 Side corner $\alpha$ ( $^{\circ}$ )	链板宽度 Width of sidebar h2 (mm)	抗拉强度 Tensile strength (KN)	每米重量 Weight per meter (kg/m)
英制系列 British system series	X348	76.6	12.7	47	3050.5/3095.2	40	9	27	98	2.7
	X458	102.4	16	58	3063.1/3090.2	30	9	35	187	5.2
	468H	102.4	19.5	84.1	3063.1/3090.2	30	9	47.8	311.7	11.5
	X678	153.2	22.3	77	3055.1/3082.8	20	7	51.6	318	9.5
	698	153.2	28	95.3	3055.1/3082.8	20	7	60	515	17.0
	698H	152.4	39	154	3039.2/3066.6	20	7	72	1078	37.7
公制系列 Metric system series	F100X16	100.0	15.5	77	2991.3/3018.3	30	9	35	187	4.7
	F100X17	100.0	17	77	2991.3/3018.3	30	9	35	187	4.0
	F160X24	160.0	23.5	96	3190.7/3219.5	20	7	51.6	318	10.3

## 模锻滑架

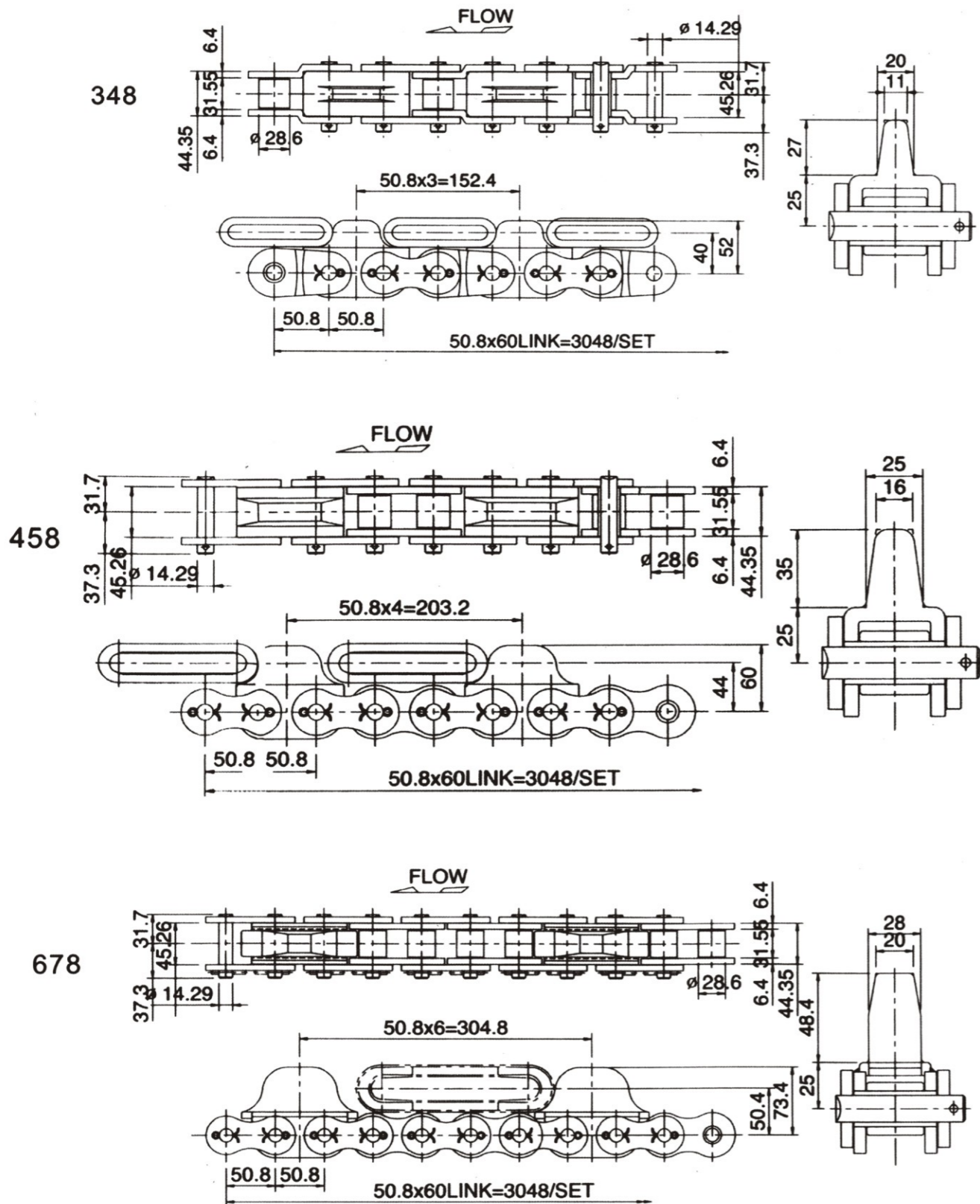


滑架的作用是承受物件，吊具及链条的重量，仔垂直弯曲段还要承受链条张紧的合力，并能保证链条按轴道的线路运行。在线路中两个负载滑架之间距离超过800-900mm时，可在中间增加一个空载滑架。

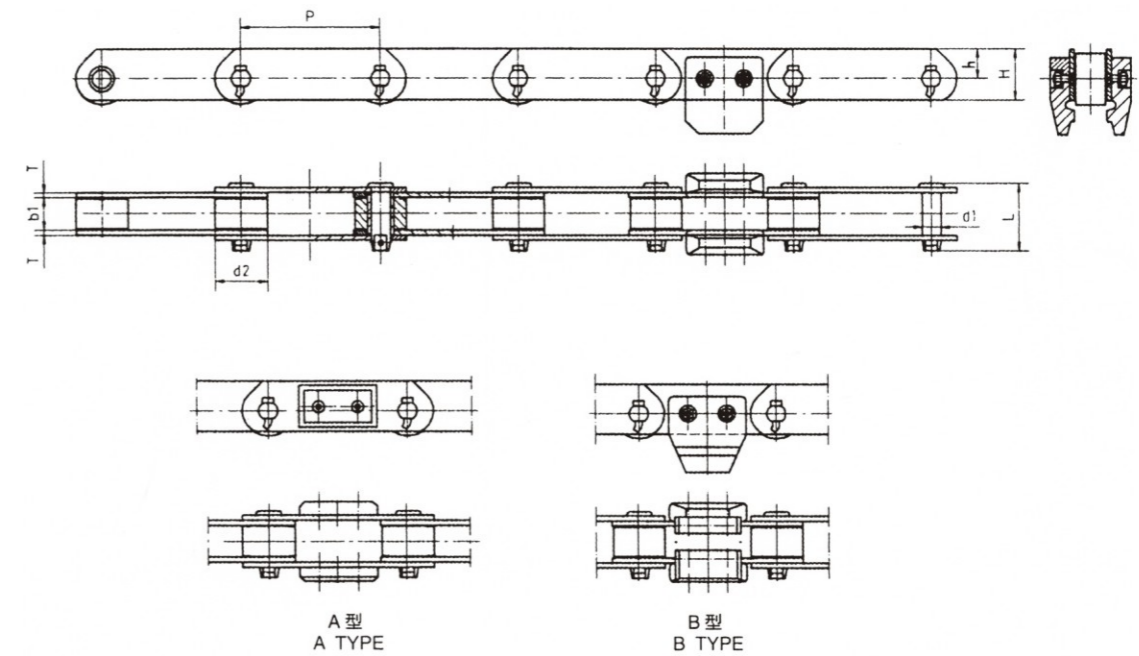
The sliding frame is used to bear weight of objects, hoisting tool and chain and its vertical curved section shall also bear resultant force of tensioned chains and ensure running of chain along the channel of the shaft. In case the distance between two load slideing frames is over 800-900 mm, a free-load sliding frame can be added.



驱动链



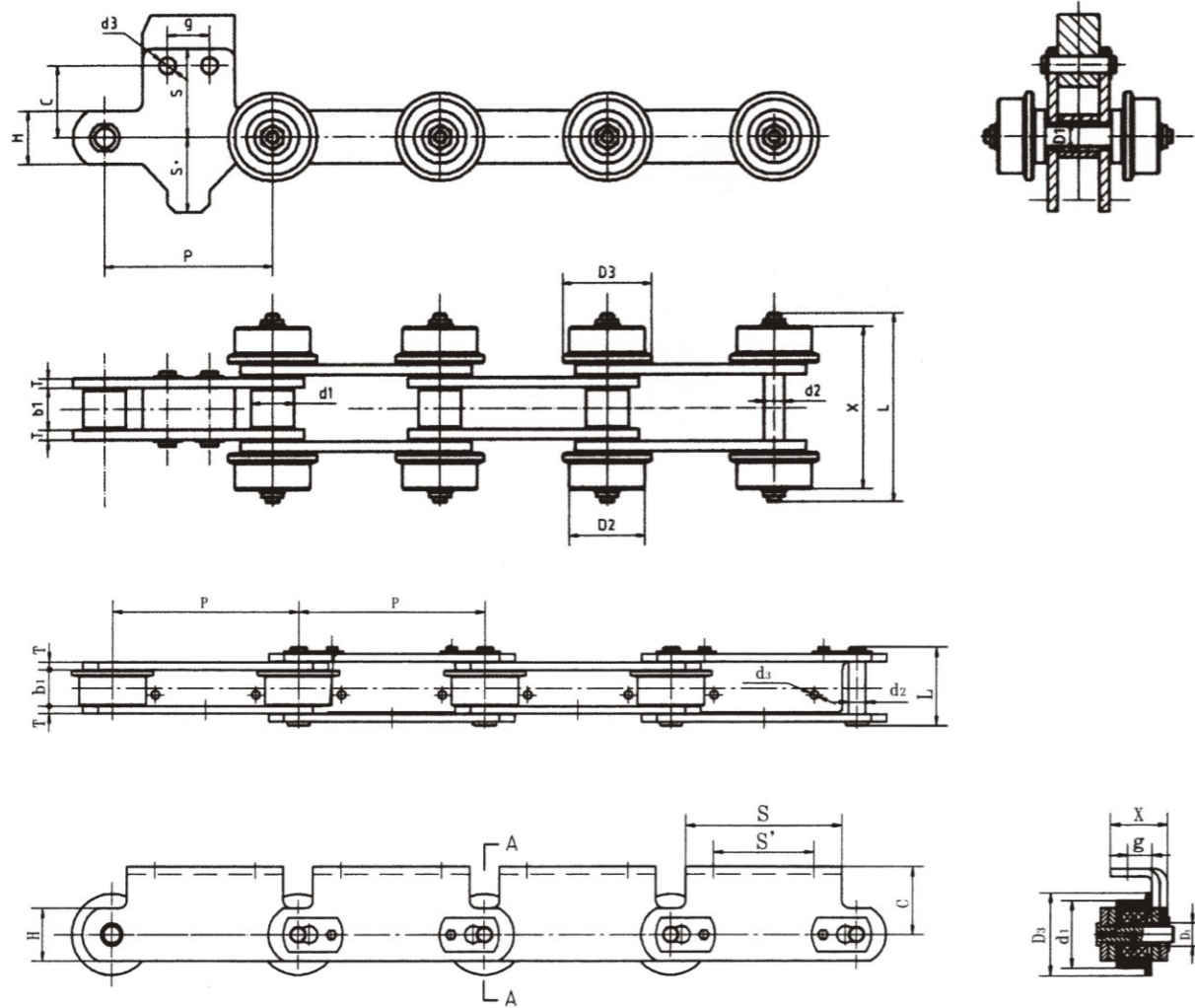
装配线输送链



链号 Chain No.	节距 Pitch	内节内宽 Inner width of inner link	滚子直径 Diameter of roller	销轴直径 Diameter of pin	销轴长度 Length of pin	链板高度 Height of sidebar	链板高度 Height of sidebar	链板厚度 Thickness of sidebar	极限拉伸载荷 Ultimate tensile strength (KN)
	P (mm)	b1 min (mm)	d2 max (mm)	d1 max (mm)	L max (mm)	H max (mm)	h max (mm)	T max (mm)	
P160-1	160	38	50	22	78.5	60	35	6	160
P160-2	160	38	50	17	73.7	50	30	6	160

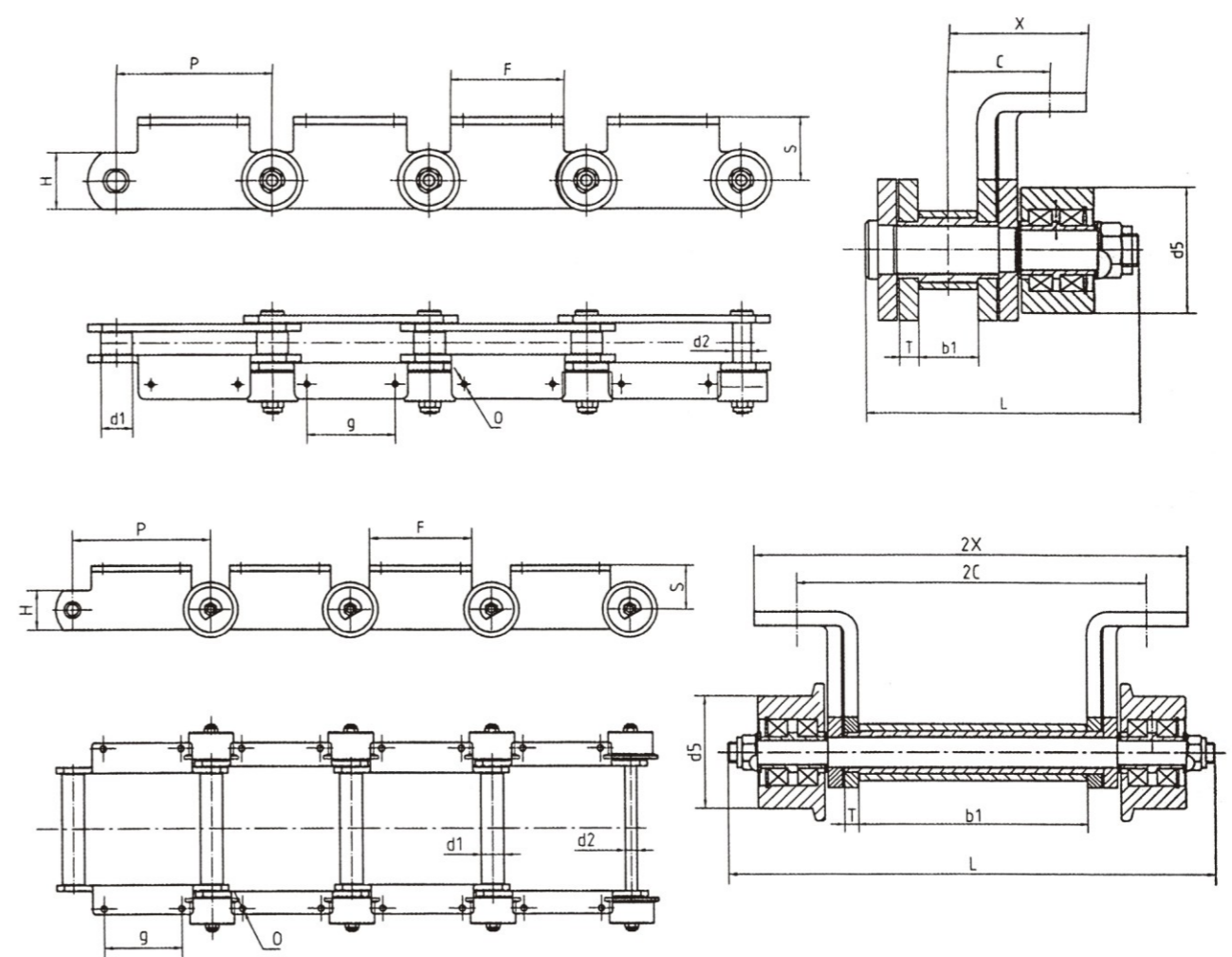


装配线输送链



链号 Chain No.	节距 Pitch P (mm)	内节内宽 Inner width of inner link b1 min (mm)	滚子直径 Diameter of roller d1 max (mm)	销轴 Pin		套筒外径 D1 (mm)	滚子直径 Diameter of roller			链板 Plate		附件 Attachment						极限载荷 Ultimate tensile strength (KN)
				直径 Diameter d2 max (mm)	长度 Length L max (mm)		高度 Height H max (mm)	厚度 Thickness T max (mm)	C (mm)	g (mm)	S (mm)	S' (mm)	X (mm)	d3 (mm)				
CPC100	100	25	25.4	12	113	17.6	45	53	32	6	43	25	53	45	97	10	70	
MC040939	250	48	90	21	104	28	-	108	70	10	90	33	210	135	77	11	300	
P200F80	200	42	60	20	98	30	-	80	50	10	65	24	140	100	38.5	12	280	
M160-P250	250	42	65	18	80	25	-	76	50	6	90	28	180	140	56	76	160	

装配线输送链



链号 Chain No.	节距 Pitch P (mm)	内节内宽 Inner width of inner link b1 min (mm)	滚子直径 Diameter of roller d1 (mm)	销轴 Pin		链板 Plate		滚子直径 Diameter of roller d5 max (mm)	附件 Attachment						极限载荷 Ultimate tensile strength (KN)
				直径 Diameter d2 max (mm)	长度 Length L max (mm)	高度 Height H max (mm)	厚度 Thickness T max (mm)		C (mm)	g (mm)	S (mm)	F (mm)	X (mm)	O (mm)	
MC1011.6	250	194	52	25.5	398	70	10	76	145	120	79	170	175	11	224
MC1011.5	250	38	50	30	173.3	90	12	80	66	140	100	180	89	M10	450
P160SSK2	160	82	50	30	328	64	8	85	125	85	100	115	155	9	160

